



**AMARC RESOURCES LTD.**

CONDENSED CONSOLIDATED INTERIM FINANCIAL STATEMENTS

FOR THE THREE MONTHS ENDED

JUNE 30, 2023, and 2022

*(Expressed in Canadian Dollars)*

*(Unaudited)*

## **Notice to Reader**

---

In accordance with subsection 4.3(3) of National Instrument 51-102, management of the Company advises that the Company's auditors have not performed a review of these interim financial statements.

## Amarc Resources Ltd.

### Condensed Interim Consolidated Statements of Financial Position

(Unaudited - Expressed in Canadian Dollars)

	Note	June 30, 2023 (\$)	March 31, 2023 (\$)
<b>ASSETS</b>			
<b>Current assets</b>			
Cash	3	7,324,073	5,131,510
Amounts receivable and other assets	6	117,715	218,351
Marketable securities	4	82,342	139,284
		7,524,130	5,489,145
<b>Non-current assets</b>			
Restricted cash	5	539,834	539,834
Right-of-use asset	13	57,164	62,208
<b>Total assets</b>		<b>8,121,128</b>	<b>6,091,187</b>
<b>LIABILITIES AND SHAREHOLDERS' EQUITY</b>			
<b>Current liabilities</b>			
Accounts payable and accrued liabilities	8	718,822	1,180,863
Advanced contributions received	7(b, c)	6,973,993	4,124,349
Balances due to related parties	11	582,418	530,512
Lease liability	13	21,435	20,696
		8,296,668	5,856,420
<b>Non-current liabilities</b>			
Director's loan	9	678,477	648,005
Lease liability	13	46,608	52,207
<b>Total liabilities</b>		<b>9,021,753</b>	<b>6,556,632</b>
<b>Shareholders' deficiency</b>			
Share capital	10	65,228,921	65,228,921
Reserves	10	4,259,712	4,289,896
Accumulated deficit		(70,389,258)	(69,984,263)
		(900,625)	(465,446)
<b>Total liabilities and shareholders' deficiency</b>		<b>8,121,128</b>	<b>6,091,186</b>

Nature of operations and going concern (note 1)

Events after the reporting period (note 15)

*The accompanying notes are an integral part of these condensed consolidated interim financial statements.*

/s/ Robert A. Dickinson

/s/ Scott D. Cousens

Robert A. Dickinson  
Director

Scott D. Cousens  
Director

## Amarc Resources Ltd.

### Condensed Interim Consolidated Statements of (Income) Loss

(Unaudited - Expressed in Canadian Dollars, except for weighted average number of common shares)

	Note	Three months ended June 30,	
		2023	2022
		(\$)	(\$)
<b>Expenses</b>			
Exploration and evaluation	7	2,395,347	1,809,381
Assays and analysis		360,966	50,756
Drilling		-	342,027
Environmental		17,470	-
Equipment rental		37,466	-
Freight		24,591	-
Geological, including geophysical		804,324	198,506
Graphics		10,982	-
Helicopter and fuel		431,025	213,775
Property acquisition and assessments costs		102,928	102,418
Site activities		444,521	727,583
Socioeconomic		44,806	128,534
Technical data		14,453	11,250
Travel and accommodation		101,815	34,532
Administration		181,113	146,576
Legal, accounting and audit		3,944	8,469
Office and administration	12(b)	72,332	67,608
Rent		12,595	9,900
Shareholder communication		70,906	33,230
Travel and accommodation		16,265	4,442
Trust and regulatory		5,071	22,927
Equity-settled share-based compensation		26,758	38,792
<b>Cost recoveries</b>	7	(1,799,566)	(2,538,247)
		803,652	(543,498)
<b>Other items</b>			
Finance income		(85,956)	(1,983)
Interest expense – director's loans	9	24,932	28,712
Accretion expense - office lease		2,071	2,596
Other fee income	7	(375,000)	(239,835)
Amortization of right-of-use asset		5,045	5,044
Transaction cost – director's loans	9	30,472	18,661
Foreign exchange loss		(220)	593
<b>Net (income) loss</b>		404,996	(729,711)
<b>Other comprehensive (income) loss</b>			
<i>Items that will not be reclassified subsequently to loss:</i>			
Change in value of marketable securities		56,942	(98,524)
<b>Total other comprehensive (income) loss</b>		461,938	(828,235)
<b>Basic and diluted (income) loss per share</b>		0.00	(0.00)
<b>Weighted average number of common shares outstanding</b>			
		186,602,894	186,602,894

The accompanying notes are an integral part of these condensed consolidated interim financial statements.

## Amarc Resources Ltd.

### Condensed Interim Consolidated Statements of Comprehensive Income (loss)

(Unaudited - Expressed in Canadian Dollars)

	Three months ended June 30,	
	2023	2022
<b>Net income (loss)</b>	\$ (404,996)	\$ 729,711
<b>Other comprehensive income (loss):</b>		
Items that will not be reclassified subsequently to profit and loss:		
Revaluation of marketable securities	(56,942)	98,524
<b>Total other comprehensive income (loss)</b>	(56,942)	98,524
<b>Comprehensive income</b>	\$ (461,938)	\$ 828,235

*The accompanying notes are an integral part of these condensed consolidated interim financial statements.*

## Amarc Resources Ltd.

### Condensed Interim Consolidated Statements of Changes in (Deficiency) Equity

(Unaudited - Expressed in Canadian Dollars, except for share information)

	Share capital		Reserves			Deficit	Total
	Number of shares (#)	Amount (\$)	Share-based payments reserve (\$)	Investment revaluation reserve (\$)	Share warrants reserve (\$)		
Balance at April 1, 2022	186,602,894	65,228,921	2,386,230	(1,327,802)	3,035,907	(69,951,679)	(628,423)
Net loss for the period	-	-	-	-	-	729,711	729,711
Other comprehensive loss for the period	-	-	-	98,524	-	-	98,524
Total comprehensive loss	-	-	-	98,524	-	729,711	828,235
Issuance of share purchase warrants	-	-	-	-	99,191	-	99,191
Equity-settled share-based compensation	-	-	38,792	-	-	-	38,792
<b>Balance at June 30, 2022</b>	<b>186,602,894</b>	<b>65,228,921</b>	<b>2,425,022</b>	<b>(1,229,278)</b>	<b>3,135,098</b>	<b>(69,221,968)</b>	<b>337,795</b>
Balance at April 1, 2023	186,602,894	65,228,921	2,650,490	(1,495,692)	3,135,098	(69,984,262)	(465,445)
Net income for the period	-	-	-	-	-	(404,996)	(404,996)
Other comprehensive loss for the period	-	-	-	(56,942)	-	-	(56,942)
Total comprehensive income	-	-	-	(56,942)	-	(404,996)	(461,938)
Equity-settled share-based compensation	-	-	26,758	-	-	-	26,758
<b>Balance at June 30, 2023</b>	<b>186,602,894</b>	<b>65,228,921</b>	<b>2,677,248</b>	<b>(1,552,634)</b>	<b>3,135,098</b>	<b>(70,389,258)</b>	<b>(900,625)</b>

*The accompanying notes are an integral part of these condensed consolidated interim financial statements.*

## Amarc Resources Ltd.

### Condensed Interim Consolidated Statements of Cash Flows

(Unaudited - Expressed in Canadian Dollars)

	Note	Three months ended June 30,	
		2023	2022
		(\$)	(\$)
<b>Operating activities</b>			
Net income (loss) for the period		(404,996)	729,711
Adjustments for:			
Amortization of right-of-use asset	13	5,045	5,044
Equity-settled share-based compensation		26,758	38,792
Office lease accretion per IFRS 16	13	2,071	2,596
Office base rent recorded as lease reduction per IFRS 16	13	(6,931)	(6,605)
Interest expense – director's loans	9	–	28,712
Transaction cost – director's loans	9	30,472	18,661
Changes in working capital items			
Amounts receivable and other assets		100,636	(83,638)
Restricted cash		–	(294,455)
Accounts payable and accrued liabilities		(462,042)	1,070,887
Advanced contributions received	7	2,849,644	–
Balances due to related parties		51,906	14,797
Net cash provided by (used in) operating activities		2,192,563	1,524,501
<b>Financing activities</b>			
Proceeds from director's loan		–	350,000
Net cash provided by (used in) financing activities		–	350,000
<b>Net increase in cash</b>		2,192,563	1,874,501
<b>Cash, beginning balance</b>		5,131,510	370,784
<b>Cash, ending balance</b>		7,324,073	2,245,285

*The accompanying notes are an integral part of these condensed consolidated interim financial statements.*

# AMARC RESOURCES LTD.

## Notes to the Condensed Consolidated Interim Financial Statements.

For the three months ended June 30, 2023, and 2022

*(Unaudited – Expressed in Canadian Dollars, unless otherwise stated)*

---

### 1. NATURE AND CONTINUANCE OF OPERATIONS

Amarc Resources Ltd. (“Amarc” or the “Company”) is a company incorporated under the laws of the Province of British Columbia (“BC”). Its principal business activity is the acquisition and exploration of mineral properties. The Company’s mineral property interests are located in BC. The address of the Company’s corporate office is 14th Floor, 1040 West Georgia Street, Vancouver, BC, Canada V6E 4H1.

The Company is in the process of exploring its mineral property interests and has not yet determined whether its mineral property interests contain economically recoverable mineral reserves. The Company’s continuing operations are entirely dependent upon the existence of economically recoverable mineral reserves, the ability of the Company to obtain the necessary financing to continue the exploration and development of its mineral property interests and to obtain the permits necessary to mine, and the future profitable production from its mineral property interest or proceeds from the disposition of its mineral property interests.

These condensed consolidated interim financial statements as at and for the year ended June 30, 2023 (the “Financial Statements”) have been prepared on a going concern basis, which contemplates the realization of assets and the discharge of liabilities in the normal course of business for the foreseeable future. As at June 30, 2023, the Company had cash of \$7,324,073, working capital deficiency of \$772,538, and an accumulated deficit of \$70,389,258.

The Company will need to seek additional financing to meet its exploration and development objectives. The Company has a reasonable expectation that additional funds will be available when necessary to meet ongoing exploration and development costs. However, there can be no assurance that the Company will continue to be able to obtain additional financial resources or will achieve profitability or positive cash flows. If the Company is unable to obtain adequate additional financing, the Company will be required to re-evaluate its planned expenditures until additional funding can be raised through financing activities. These factors indicate the existence of a material uncertainty that casts significant doubt about the Company’s ability to continue as a going concern.

These Financial Statements do not include any adjustments to the recoverability and classification of recorded asset amounts and classification of liabilities that may be necessary should the Company be unable to continue as a going concern.

### 2. SIGNIFICANT ACCOUNTING POLICIES

The principal accounting policies applied in the preparation of these Financial Statements are described below. These policies have been consistently applied for all years presented, unless otherwise stated.

#### *(a) Statement of compliance*

These Financial Statements have been prepared in accordance with IAS 34, Interim Financial Reporting (“IAS 34”), as issued by the International Accounting Standards Board (“IASB”) and the interpretations by the IFRS Interpretation Committee (“IFRIC”). These Financial Statements do not include all of the information and footnotes required by International Financial Reporting Standards (“IFRS”) for complete financial statements for year-end reporting purposes. These Financial Statements should be read in conjunction with the Company’s consolidated financial statements as at and for the year ended March 31, 2023. Results for the reporting period ended June 30, 2021 are not necessarily indicative of future results. The accounting policies and methods of computation applied by the Company in these



## **AMARC RESOURCES LTD.**

### **Notes to the Condensed Consolidated Interim Financial Statements.**

For the three months ended June 30, 2023, and 2022

*(Unaudited – Expressed in Canadian Dollars, unless otherwise stated)*

Financial Statements are the same as those applied by the Company in its more recent annual financial statements, which are filed under the Company's provide on SEDAR at [www.sedar.com](http://www.sedar.com).

The Board of Directors of the Company authorized these Financial Statements for issuance on August 28, 2023.

#### *(b) Basis of presentation and consolidation*

These Financial Statements have been prepared on a historical cost basis, except for certain financial instruments classified as fair value through other comprehensive income, which are reported at fair value. In addition, these Financial Statements have been prepared using the accrual basis of accounting, except for cash flow information.

These Financial Statements include the financial statements of the Company and its wholly-owned subsidiary, 1130346 B.C. Ltd., (the "Subco") incorporated under the laws of British Columbia. The Subco was incorporated for the purposes of entering into an option agreement related to the JOY District. On March 31, 2021, the Subco was dissolved, did not have any assets, liabilities, income or expenses, and all intercompany balances and transactions had been eliminated.

Certain comparative amounts have been reclassified to conform to the presentation adopted in the current period.

#### *(c) Significant accounting estimates and judgements*

The critical estimates and judgements applied in the preparation of these Financial Statements are consistent with those applied in the Company's audited consolidated financial statements as at and for the year ended March 31, 2023.

#### *(d) Operating segments*

The Company operates as a single reportable segment—the acquisition, exploration and development of mineral properties. All assets are held in Canada.

The functional and presentational currency of the Company is the Canadian Dollar ("CAD").

### **3. CASH**

The Company's cash is invested in business accounts, which are available on demand by the Company.

### **4. MARKETABLE SECURITIES**

As at June 30, 2023, the fair value of its current holdings was \$82,342 (March 31, 2023 - \$139,284) and the negative change of fair value adjustment of \$56,942 for the period ended June 30, 2023 (June 30, 2022 – postive change of fair value adjustment of \$98,524). The marketable securities include 550,000 units (shares and warrants) of Carlyle Commodities Corp., a Canadian public company listed on TSX-V exchange.

## AMARC RESOURCES LTD.

### Notes to the Condensed Consolidated Interim Financial Statements.

For the three months ended June 30, 2023, and 2022

*(Unaudited – Expressed in Canadian Dollars, unless otherwise stated)*

As at June 30, 2023, the Company held the following marketable securities:

Company	Shares/Warrants Held (#)	Cost (\$)	Fair Value (\$)	Fair Value Increase(Decrease) (\$)
Carlyle Commodities Corp - Shares	550,000	907,500	49,500	(858,000)
Carlyle Commodities Corp - Warrants	550,000	727,000	19,000	(708,000)
Other	1,329,189	14,237	13,843	(394)
<b>Total</b>	<b>2,429,189</b>	<b>1,648,737</b>	<b>82,343</b>	<b>(1,566,394)</b>

#### 5. RESTRICTED CASH

Restricted cash represents amounts held in support of exploration permits. The amounts are refundable subject to the consent of regulatory authorities upon completion of any required reclamation work on the related projects.

#### 6. AMOUNTS RECEIVABLE AND OTHER ASSETS

	June 30, 2023 (\$)	March 31, 2022 (\$)
Sales tax refundable	111,985	199,184
Prepaid	5,730	19,167
	<b>117,715</b>	<b>218,351</b>

#### 7. EXPLORATION AND EVALUATION EXPENSES AND COST RECOVERIES

Below is a summary of the Company's major exploration property interests, together with the material property transactions.

##### (a) *IKE District*

The IKE Property mineral claims (a subset of the IKE District mineral tenure) carry a net smelter return ("NSR") royalty obligation of 1%, subject to a \$2 million cap and which the Company is able to purchase at any time by payment of the same amount. These claims carry an additional NSR royalty of 2%, subject to the Company retaining the right to purchase up to the entire royalty amount by the payment of up to \$4 million. The Company has also agreed to make annual advance royalty payments of \$50,000 to the holders of the 2% NSR royalty interest and, upon completion of a positive feasibility study, to issue to these same parties 500,000 common shares.

The Granite Property mineral claims (a subset of the IKE District mineral tenure) are subject to a 2% NSR royalty which can be purchased for \$2 million. In addition, there is an underlying 2.5% NSR royalty on certain mineral claims within the Granite Property, which can be purchased at any time for \$1.5 million less any amount of royalty already paid.

The entire IKE District is subject to a 1% NSR royalty from mine production capped at a total of \$5 million.

## AMARC RESOURCES LTD.

### Notes to the Condensed Consolidated Interim Financial Statements.

For the three months ended June 30, 2023, and 2022

*(Unaudited – Expressed in Canadian Dollars, unless otherwise stated)*

---

#### *(b) JOY District*

In November 2016, the Company entered into a purchase agreement with a private company wholly-owned by one of its directors to purchase 100% of the JOY Property mineral claims (a subset of the JOY District mineral tenure) for the reimbursement of the vendor's direct acquisition costs of \$335,299.

In addition, the Company concluded agreements with each of Gold Fields Toodoggone Exploration Corporation ("GFTEC") and Cascadero Copper Corporation ("Cascadero") in mid-2017 pursuant to which the Company can purchase 100% of the PINE Property mineral claims (a subset of the JOY District Mineral tenure).

In October 2018, Amarc acquired a 100% interest in Cascadero's 49% interest in the PINE Property by completing total cash payments of \$1,000,000 and issuing 5,277,778 common shares.

In December 2019, the Company amended the GFTEC Agreement to purchase GFTEC's 51% interest in the PINE Property. Under the terms of the amendment Amarc purchased outright GFTEC's 51% interest in the PINE Property by issuing to GFTEC 5,000,000 common shares of the Company. As such, Amarc now holds a 100% interest in the PINE Property mineral claims.

The PINE Property is subject to a 3% underlying NSR royalty payable to a former owner. The Company reached an agreement with the former owner to cap the 3% NSR royalty at \$5 million payable from production for consideration totaling \$100,000 and 300,000 common shares payable in stages through to January 31, 2019 (completed).

GFTEC retains a 2.5% net profits interest ("NPI") royalty on mineral claims comprising approximately 96% of the PINE Property, which are subject to a NSR royalty payable to a former owner ("Underlying NSR") and a 1% NSR royalty on the balance of the claims that are not subject to the Underlying NSR royalty. The NPI royalty can be reduced to 1.25% at any time through the payment to GFTEC of \$2.5 million in cash or shares. The NSR royalty can be reduced to 0.5% through the payment to GFTEC of \$2.5 million in cash or shares.

In November 2019 Amarc entered into a purchase agreement with two prospectors to acquire 100% of a single mineral claim, called the Paula Property, located internal to the wider JOY District mineral tenure. The claim is subject to a 1% NSR royalty payable from commercial production that is capped at \$0.5 million.

#### *JOY District Agreement with Freeport*

On May 11, 2021, the Company and Freeport-McMoRan Mineral Properties Canada Inc. ("Freeport"), a wholly-owned subsidiary of Freeport-McMoRan Inc. (NYSE:FCX) entered into a Mineral Property Earn-in Agreement (the "Agreement") whereby Freeport may acquire up to a 70% ownership interest of the Company's JOY porphyry Cu-Au District Property.

Under the terms of the Agreement, Freeport has a two-stage option to earn up to a 70% ownership interest in the mineral claims comprising the JOY District, plus other rights and interests, over a 10 year period.

To earn an initial 60% interest, Freeport is required to fund \$35 million of work expenditures over a 5-year term.

## AMARC RESOURCES LTD.

### Notes to the Condensed Consolidated Interim Financial Statements.

For the three months ended June 30, 2023, and 2022

*(Unaudited – Expressed in Canadian Dollars, unless otherwise stated)*

These optional earn-in expenditures can be accelerated by Freeport at its discretion. Amarc will be operator during the initial earn-in period. Once Freeport has acquired such 60% interest, Amarc and Freeport will proceed to operate the JOY District through a jointly owned corporation with Freeport assuming project operatorship.

Upon Freeport earning such 60% interest, it can elect, in its sole discretion, to earn an additional 10% interest, for a total 70% interest by sole funding a further \$75 million within the following five years.

Once Freeport has finalized its earned ownership interest at either the 60% or 70% level, each party will be responsible for funding its own pro-rata share of project costs on a 60:40 or 70:30 basis.

The Company initially records the amounts of contributions received or receivable from Freeport pursuant to the Agreement as a liability (advanced contributions received) in the consolidated statements of financial position, and subsequently reallocates amounts as cost recoveries in the consolidated statements of (income) loss as the Company incurs the related expenditures.

#### *(c) DUKE District*

The DUKE District is located in central BC. In November 2016, the Company entered into a purchase agreement with a private company wholly-owned by one of its directors (Note 11(c)) to purchase a 100% interest in the DUKE Property mineral claims (a subset of the DUKE District mineral tenure) for the reimbursement of the vendor's direct acquisition costs of \$168,996.

On November 22, 2022, the Company announced that it had entered into a Mineral Property Earn-in Agreement (the "Agreement") with Boliden Mineral Canada Ltd. ("Boliden"), a wholly-owned subsidiary of the Boliden Group. Under the terms of the Agreement, Boliden has a two-staged option to earn up to a 70% interest in the DUKE District.

To earn an initial 60% interest Boliden must fund \$30 million of exploration and development expenditures within four years of the effective date of the Agreement, of which \$5 million is a committed amount to be spent in calendar 2022 and early calendar 2023. Amarc will be the operator during this initial earn-in stage.

Upon earning a 60% interest, Boliden can elect to earn an additional 10% interest in the Duke District, for an aggregate 70% interest, by funding an additional \$60 million of exploration and development expenditures at a minimum rate of \$10 million per year over the ensuing six years. Once Boliden has earned a 60% interest it will also have the right to become the operator.

Upon Boliden finalizing its earned ownership interest, Amarc and Boliden will form either a 60:40 or 70:30 unincorporated joint venture to further advance the DUKE District. At that stage, each party will be responsible for funding its own pro-rata share of project costs, or be subject to customary equity dilution, converting to a capped royalty if it falls below a 10% participating interest.

The Company initially records the amounts of contributions received or receivable from Boliden pursuant to the Agreement as a liability (Advanced contributions received) in the consolidated statements of financial position, and subsequently recognizes amounts as cost recoveries in the consolidated statements of (income) loss as the Company incurs the related expenditures.

During the three months ended June 30, 2023, the Company recorded a gross amount of cost recovery of \$1,799,566 offsetting the expenditures incurred pursuant to the Agreement.

## AMARC RESOURCES LTD.

### Notes to the Condensed Consolidated Interim Financial Statements.

For the three months ended June 30, 2023, and 2022

*(Unaudited – Expressed in Canadian Dollars, unless otherwise stated)*

During the three month period ended June 30, 2023, the Company earned a fee of \$375,000 as the project operator.

#### (d) Other property transactions

During the year ended March 31, 2020, the Company received a non-refundable payment of US\$200,000 (CDN\$260,115) pursuant to an option agreement, whereby an arms-length third party optionee agreed to earn an initial 51% interest in the Windfall Project which was comprised of 25 mineral claims located within the IKE District, by spending US\$4.2 million of exploration expenditures by October 21, 2022. On May 25, 2021, this option agreement was terminated by mutual consent of both the Company and the optionee.

On December 16, 2020 (the “Closing Date”), the Company closed the sale of its Newton Property, located in south-central BC, to Isaac Mining Corp. (“IMC”), an arms-length private company and a wholly-owned subsidiary of Carlyle Commodities Corp. (“Carlyle”). Pursuant to this sale, the Company received \$300,000 in cash from IMC and 5.5 million common shares and 5.5 million warrants of Carlyle as consideration. The 5.5 million common shares were measured at \$907,500 based on the fair market value of \$0.165 per share on the Closing Date. The 5.5 million warrants were measured at \$727,000 using the Black-Scholes option pricing model with the following assumptions: risk free-interest rate – 0.38%; dividend yield – 0.00%; expected volatility – 139.0%; expected life – 4.98 years. As Carlyle consolidated its common shares on a basis of 10 to 1 on September 1, 2022, the 550,000 post-consolidated warrants are exercisable at \$5 per warrant until December 8, 2025.

On May 16, 2022, the Company entered into a mineral claims option agreement with an arms-length third party optionor to acquire a 100% interest in and to a property, subject to a 2% NSR royalty in the event of commercial production on the property, payable until \$10,000,000 has been paid after which the NSR royalty reduces to 0.5%. The Company paid \$100,000 during the year ended March 31, 2023 and shall pay \$100,000 on or before May 31, 2023 and each year thereafter to, and including, May 31, 2031 until an aggregate of \$1,000,000 has been paid to optionor.

## 8. ACCOUNTS PAYABLE AND ACCRUED LIABILITIES

	June 30, 2023	March 31, 2022
	(\$)	(\$)
Accounts payable	471,435	944,393
Accrued liabilities	247,387	236,470
<b>Total</b>	<b>718,822</b>	<b>1,180,863</b>

## 9. DIRECTOR'S LOAN

In December 2019, the Company entered into a loan extension and amendment agreement (the “Loan”) with a director and significant shareholder of the Company (the “Lender”), pursuant to which a previous loan agreement with a maturity date of November 26, 2019 was extended for five years or earlier pending the achievement of certain financing milestones. The Loan has a principal sum of \$1,000,000, is unsecured and bears interest at a rate of 10% per annum. On December 13, 2021, a total of \$160,000 in interest was paid.

Pursuant to the Loan, the Company issued to the Lender a loan bonus comprising of 16,000,000 common share purchase warrants (the “Warrants”) with an expiry of five years and an exercise price of \$0.05 per share.

## AMARC RESOURCES LTD.

### Notes to the Condensed Consolidated Interim Financial Statements.

For the three months ended June 30, 2023, and 2022

*(Unaudited – Expressed in Canadian Dollars, unless otherwise stated)*

The Company entered into a Second Loan Amendment Agreement dated May 25, 2022, pursuant to which it agreed to a \$100,000 increase to the existing Loan (the “Additional Loan”). The Additional Loan is unsecured, bears interest at a rate of 10% per annum and is repayable on or before the earlier of November 26, 2024, the occurrence of a default or on achievement of financing milestones.

In connection with the Additional Loan, the Company issued to the Lender a loan bonus comprising of 1,176,470 common share purchase warrants (the “Bonus Warrants”), each entitling the holder to acquire one common share of the Company until November 26, 2024 at a price of \$0.085 per share.

On June 15, 2022, the Company obtained an additional short-term loan (the “Short-term Loan”) of \$250,000 with an interest rate of 12% per annum from the Lender.

In January 2023, the Company repaid the Additional Loan and Short-term Loan, including accrued interest accrued to the date of repayment.

The change in the Loan balance is as follows:

	Three months ended June 30, 2023	Year ended March 31, 2023
	(\$)	(\$)
Opening balance	648,005	644,642
Principal advances	-	350,000
Principal repayment	-	(350,000)
Transaction costs	-	(99,191)
Amortization of transaction costs	30,472	102,554
<b>Closing balance</b>	<b>678,477</b>	<b>648,005</b>

Finance expenses	Three months ended June 30,	
	2023	2022
	(\$)	(\$)
Interest on loan	24,932	28,712
Amortization of transaction costs	30,472	18,664
<b>Total</b>	<b>55,404</b>	<b>47,376</b>

## 10. SHARE CAPITAL AND RESERVES

### (a) Authorized and outstanding share capital

The Company’s authorized share capital consists of an unlimited number of common shares without par value (“Common Shares”) and an unlimited number of preferred shares. All issued Common Shares are fully paid. No preferred shares have been issued.

On August 20, 2020, 3,000,000 flow-through shares were issued pursuant to the exercise of warrants for gross proceeds of \$150,000.

On October 2, 2020, 2,000,000 flow-through shares were issued pursuant to the exercise of warrants for gross proceeds of \$100,000. \$100 related to flow-through tax filing has been deducted from the gross proceeds as issuance costs.

## AMARC RESOURCES LTD.

### Notes to the Condensed Consolidated Interim Financial Statements.

For the three months ended June 30, 2023, and 2022

*(Unaudited – Expressed in Canadian Dollars, unless otherwise stated)*

---

Approximately \$167,000 of the flow-through proceeds received were renounced to the shareholder as at December 31, 2020.

On December 2, 2021, 6,000,000 flow-through shares were issued pursuant to the exercise of warrants for gross proceeds of \$300,000.

As at June 30, 2023, the amount of flow-through proceeds remaining to be expended is approximately \$245,000 (March 31, 2023 - \$245,000), which in total must be incurred on or before December 31, 2023.

The BCMETC cannot be claimed by the Company on mineral exploration expenses related to meeting expenditure commitments pursuant to the issue of flow-through shares; however, the BCMETC itself, once received, may be used for any purpose.

As at June 30, 2023, there were 186,602,894 (March 31, 2023 – 186,602,894) Common Shares issued and outstanding.

#### *(b) Share purchase options*

On March 9, 2022, the Company granted 3,480,000 incentive stock options to certain associates to acquire an aggregate of 3,480,000 common shares at \$0.12 per share, for a period of three to five years, of which approximately 50% are being granted to insiders (Note 11(a)). All of the options are subject to the required TSXV acceptance and customary vesting provisions over 24 months. The fair value of these options at issue was determined to be \$366,912 using the Black-Scholes pricing model and based on the following assumptions: risk-free rate of 1.65%; expected volatility of 139%; underlying market price of \$0.12; strike price of \$0.12; expiry term of 3 - 5 years; and dividend yield of nil.

On July 8, 2022, the Company entered into an Investor Relations Agreement (the “Agreement”) with Kin Communications Inc. (“Kin”). Pursuant to the Agreement, the Company granted Kin 1,000,000 stock options entitling Kin to purchase 1,000,000 common shares of the Company at a price of \$0.11 per share for a period of five years. These options vest in four instalments of 25% each instalment, with the first instalment vesting 90 days after the effective date of the Agreement. The fair value of these options was determined at \$88,486 using the Black-Scholes pricing model based on the following assumptions: risk-free rate of 3.21%; expected volatility of 139%; underlying market price of \$0.10; strike price of \$0.11; expiry term of 5 years; and, dividend yield of nil.

On April 11, 2023, the Company granted 520,000 incentive stock options to certain associates to acquire an aggregate of 520,000 common shares at \$0.125 per share, for a period of three to three years, of which approximately 200,000 options are being granted to insiders (Note 11(a)). All of the options are subject to the required TSXV acceptance and customary vesting provisions over 24 months. The fair value of these options at issue was determined to be \$49,647 using the Black-Scholes pricing model and based on the following assumptions: risk-free rate of 3.56%; expected volatility of 123%; underlying market price of \$0.13; strike price of \$0.125; expiry term of 3 years; and dividend yield of nil.

## AMARC RESOURCES LTD.

### Notes to the Condensed Consolidated Interim Financial Statements.

For the three months ended June 30, 2023, and 2022

*(Unaudited – Expressed in Canadian Dollars, unless otherwise stated)*

The following summarizes changes in the Company's share purchase options:

	June 30, 2023		March 31, 2023	
	Weighted Average Exercise Price	Number of Options	Weighted Average Exercise Price	Number of Options
Beginning balance	0.10	6,480,000	0.09	5,480,000
Granted	0.125	520,000	0.11	1,000,000
Ending balance	0.11	7,000,000	0.10	6,480,000

The following summarizes information on the options outstanding and exercisable as at June 30, 2023:

Exercise price	Expiry date	Weighted Average Remaining Contractual Life (periods)	Number of Options Outstanding	Number of Options Exercisable
\$ 0.05	4-Oct-24	1.27	2,000,000	2,000,000
\$ 0.12	9-Mar-25	1.69	2,580,000	1,720,000
\$ 0.12	9-Mar-27	3.69	900,000	500,000
\$ 0.11	8-Jul-27	4.02	1,000,000	500,000
\$ 0.125	11-Apr-26	2.78	520,000	156,000
		2.24	7,000,000	4,876,000

#### (c) Share purchase warrants

The following common summarizes changes in the Company's share purchase warrants:

	June 30, 2023		March 31, 2023	
	Weighted Average Exercise Price	Number of Warrants	Weighted Average Exercise Price	Number of Warrants
Beginning balance	0.06	6,176,470	0.05	5,000,000
Granted pursuant to the Loan (Note 9)		-	0.085	1,176,470
Ending balance	0.06	6,176,470	0.06	6,176,470

#### (i) 2019 loan bonus warrants

In December 2019, 16,000,000 share purchase warrants were issued pursuant to the Loan (Note 9). The fair value of these warrants at issue was determined to be \$490,449 at \$0.03 per warrant using the Black-Scholes pricing model and based on the following assumptions: risk-free rate of 1.57%; expected volatility of 144%; underlying market price of \$0.035; strike price of \$0.05; expiry term of 5 years; and dividend yield of nil.



## AMARC RESOURCES LTD.

### Notes to the Condensed Consolidated Interim Financial Statements.

For the three months ended June 30, 2023, and 2022

*(Unaudited – Expressed in Canadian Dollars, unless otherwise stated)*

#### *(ii) 2022 loan bonus warrants*

In June 2022, 1,176,470 share purchase warrants were issued pursuant to the Loan (Note 9). The fair value of these warrants at issue was determined to be \$99,191 at \$0.085 per warrant using the Black-Scholes pricing model and based on the following assumptions: risk-free rate of 3.28%; expected volatility of 138%; underlying market price of \$0.11; strike price of \$0.085; expiry term of 2.45 years; and dividend yield of nil.

## 11. RELATED PARTY TRANSACTIONS

	June 30, 2023	March 31, 2023
<b>Balances due to related parties</b>	<b>(\$)</b>	<b>(\$)</b>
Hunter Dickinson Services Inc.	379,254	327,348
Robert Dickinson (interest payable)	190,082	190,082
United Mineral Services Ltd.	8,101	7,586
Thomas Wilson (CFO fees)	4,981	5,496
<b>Total</b>	<b>582,418</b>	<b>530,512</b>

#### *(a) Transactions with key management personnel*

Key management personnel (“KMP”) are those persons that have the authority and responsibility for planning, directing, and controlling the activities of the Company, directly and indirectly, and by definition include all the directors of the Company.

Note 9 includes the details of a director’s loan. Note 7(b) and 7(c) includes the details of the acquisition of mineral property interests from a private entity wholly-owned by one of the directors of the Company.

During the three month period ended June 30, 2023 and 2022, the Company’s President, Chief Executive Officer and Director and Corporate Secretary provided services to the Company under a service agreement with Hunter Dickinson Services Inc. (Note 11(b)).

During the three month period ended June, 2023, the Company recorded share-based compensation expense of \$11,679 (June 30, 2022 - \$12,778) in relation to 1,950,000 (June 30, 2022 - 850,000) stock options issued to directors and officers of the Company in the prior year (Note 10 (b)).

During the three month period ended June 30, 2023, the Company incurred fees totaling \$16,488 (2022 - \$9,000) in respect of services provided by the Chief Financial Officer.

During the three month period ended June 30, 2023, the Company incurred fees totaling \$35,293 (2022 - \$41,461) in respect of geological services provided by the VP Exploration.

#### *(b) Hunter Dickinson Services Inc.*

Hunter Dickinson Inc. (“HDI”) and its wholly-owned subsidiary Hunter Dickinson Services Inc. (“HDSI”) are private companies established by a group of mining professionals. HDSI provides contract services for a number of mineral exploration and development companies, and also to companies that are outside of the mining and mineral development space. Amarc acquires services from a number of related and arms-length contractors, and it is at Amarc’s discretion that HDSI provides certain contract services.

## AMARC RESOURCES LTD.

### Notes to the Condensed Consolidated Interim Financial Statements.

For the three months ended June 30, 2023, and 2022

*(Unaudited – Expressed in Canadian Dollars, unless otherwise stated)*

The Company has one director in common with HDSI, namely Robert Dickinson. Also, the Company's President, Chief Executive Officer and Director, and Corporate Secretary are contracted to work for the Company under an employee secondment agreement between the Company and HDSI.

Pursuant to an agreement dated July 2, 2010, HDSI provides certain cost effective technical, geological, corporate communications, regulatory compliance, and administrative and management services to the Company, on a non-exclusive basis as needed and as requested by the Company. As a result of this relationship, the Company has ready access to a range of diverse and specialized expertise on a regular basis, without having to engage or hire full-time employees or experts. The Company benefits from the economies of scale created by HDSI which itself serves several clients both within and external to the exploration and mining sector.

The Company is not obligated to acquire any minimum amount of services from HDSI. The monetary amount of the services received from HDSI in a given period of time is a function of annually set and agreed charge-out rates for and the time spent by each HDSI employee engaged by the Company.

HDSI also incurs third-party costs on behalf of the Company. Such third-party costs include, for example, capital market advisory services, communication services and office supplies. Third-party costs are billed at cost, without markup.

There are no ongoing contractual or other commitments resulting from the Company's transactions with HDSI, other than the payment for services already rendered and billed. The agreement may be terminated upon 60 days' notice by either the Company or HDSI.

The following is a summary of transactions with HDSI that occurred during the reporting period:

	Three months ended June 30,	
	2023	2022
<i>(rounded to the nearest thousand CAD)</i>	(\$)	(\$)
Services received from HDSI and as requested by the Company	290,000	186,000
Information technology – infrastructure and support services	15,000	15,000
Office rent	13,000	10,000
Reimbursement, at cost, of third-party expenses incurred by HDSI on behalf of the Company	81,000	36,000
<b>Total</b>	<b>399,000</b>	<b>247,000</b>

#### (c) *United Mineral Services Ltd.*

United Mineral Services Ltd. (“UMS”) is a private company wholly-owned by one of the directors of the Company. UMS is engaged in the acquisition and exploration of mineral property interests. There were no transactions with UMS that occurred during the three months ended June 30, 2023 and 2022.

## AMARC RESOURCES LTD.

### Notes to the Condensed Consolidated Interim Financial Statements.

For the three months ended June 30, 2023, and 2022

*(Unaudited – Expressed in Canadian Dollars, unless otherwise stated)*

## 12. SUPPLEMENTARY INFORMATION TO THE CONSOLIDATED STATEMENTS OF LOSS

### (a) Salaries, fees and benefits

Salaries, fees and benefits included in exploration and evaluation expenses and administration expenses are as follows:

	Three months ended June 30,	
	2023	2022
	(\$)	(\$)
<b>Salaries, fees and benefits</b>		
Exploration and evaluation expenses	944,000	508,000
Administration expenses	56,000	53,000
	<u>1,000,000</u>	<u>561,000</u>

(1) rounded to the nearest thousand dollar

(2) includes salaries and benefits included in office and administration expenses (Note 12(b)) and other salaries and benefits expenses classified as administration expenses

### (b) Office and administration expenses

Office and administration expenses include the following:

	Three months ended June 30,	
	2023	2022
	(\$)	(\$)
Salaries and Benefits	59,000	53,000
Data processing and retention	3,000	4,000
Insurance	7,000	7,000
Other office expenses	5,000	4,000
	<u>74,000</u>	<u>68,000</u>

(1) rounded to the nearest thousand dollar

## 13. OFFICE LEASE – RIGHT OF USE ASSET AND LEASE LIABILITY

The Company subleases corporate offices in Vancouver, BC from HDSI under a lease agreement dated May 1, 2021, and the lease expires on April 29, 2026.

### *Right-of-use asset*

A summary of the changes in the right-of-use asset for the three months ended June 30, 2023 and March 31, 2023 are as follows,

<b>Right-of-use-asset</b>	<b>(\$)</b>
Balance at March 31, 2022	82,384
Amortization	(20,176)
Balance at March 31, 2023	<u>62,208</u>
Amortization	(5,044)
Balance at June 30, 2023	<u>57,164</u>

## AMARC RESOURCES LTD.

### Notes to the Condensed Consolidated Interim Financial Statements.

For the three months ended June 30, 2023, and 2022

*(Unaudited – Expressed in Canadian Dollars, unless otherwise stated)*

---

#### Lease liability

On May 1, 2021, the Company entered into the lease agreement, which resulted in the lease liability of \$100,877 (undiscounted value of \$134,766, discount rate used is 12.00%). This liability represents the monthly lease payment from May 1, 2021 to April 29, 2026, the end of the lease term less abatement granted by HDSI.

A summary of changes in the lease liability during the three months ended June 30, 2023 and March 31, 2023 are as follows:

<b>Lease liability</b>	<b>(\$)</b>
Balance at March 31, 2022	90,028
Lease payment – base rent portion	(26,745)
Lease liability – accretion expense	9,620
Balance as at Mach 31, 2023	72,903
Current portion	20,696
Long-term portion	52,207

<b>Lease liability</b>	<b>(\$)</b>
Balance at March 31, 2023	72,903
Lease payment – base rent portion	(6,931)
Lease liability – accretion expense	2,071
Balance as at March 31, 2023	68,043
Current portion	21,435
Long-term portion	46,608

The following is a schedule of the Company's future lease payments (base rent portion) under the lease obligations:

<b>Future lease payments (base rent portion only)</b>	<b>(\$)</b>
Fiscal 2024 (July 1, 2023 to March 31, 2024)	21,126
Fiscal 2025 (April 1, 2024 to March 31, 2025)	28,165
Fiscal 2026 (April 1, 2025 to March 31, 2026)	28,165
Fiscal 2027 (April 1, 2026 to April 29, 2027) (Note 6)	2,347
Total undiscounted lease payments	79,803
Less: imputed interest	(11,760)
Lease liability as at March 31, 2023	68,043

## AMARC RESOURCES LTD.

### Notes to the Condensed Consolidated Interim Financial Statements.

For the three months ended June 30, 2023, and 2022

*(Unaudited – Expressed in Canadian Dollars, unless otherwise stated)*

---

#### 14. FINANCIAL RISK MANAGEMENT

##### *(a) Capital management objectives*

The Company's primary objectives when managing capital are to safeguard the Company's ability to continue as a going concern so that it can continue to provide returns for shareholders, and to have sufficient liquidity available to fund ongoing expenditures and suitable business opportunities as they arise.

The Company considers the components of shareholders' equity as well as its cash as capital. The Company manages its capital structure and makes adjustments to it in light of changes in economic conditions and the risk characteristics of the underlying assets. In order to maintain or adjust the capital structure, the Company may issue equity, sell assets, or return capital to shareholders as well as issue or repay debt.

The Company's investment policy is to invest its cash in highly liquid, short-term, interest-bearing investments having maturity dates of three months or less from the date of acquisition, which are readily convertible into known amounts of cash.

The Company is not subject to any imposed equity requirements.

There were no changes to the Company's approach to capital management during the three months ended June 30, 2023.

##### *(b) Carrying amounts and fair values of financial instruments*

The Company's marketable securities are carried at fair value based on quoted prices in active markets.

As at June 30, 2023 and March 31, 2023, the carrying values of the Company's financial assets and financial liabilities approximate their fair values.

##### *(c) Financial instrument risk exposure and risk management*

The Company is exposed in varying degrees to a variety of financial instrument-related risks. The Board of Directors approves and monitors the risk management processes, inclusive of documented treasury policies, counterparty limits, and controlling and reporting structures. The type of risk exposure and the way in which such exposure is managed is provided as follows:

###### Credit risk

Credit risk is the risk of potential loss to the Company if a counterparty to a financial instrument fails to meet its contractual obligations. The Company's credit risk is primarily attributable to its liquid financial assets, including cash, and amounts receivable and other assets. The carrying values of these financial assets represent the Company's maximum exposure to credit risk.

The Company limits the exposure to credit risk by only investing its cash in high-credit quality financial institutions in business and savings accounts, which are available on demand by the Company for its programs.

## **AMARC RESOURCES LTD.**

### **Notes to the Condensed Consolidated Interim Financial Statements.**

For the three months ended June 30, 2023, and 2022

*(Unaudited – Expressed in Canadian Dollars, unless otherwise stated)*

---

#### Liquidity risk

Liquidity risk is the risk that the Company will encounter difficulty in meeting the obligations associated with its financial liabilities that are settled by delivering cash or other financial assets. The Company ensures that there is sufficient cash in order to meet its short-term business requirements after taking into account the Company's holdings of cash.

The Company has sufficient cash to meet its commitments associated with its financial liabilities in the near term, other than the amounts payable to related parties.

#### Interest rate risk

The Company is subject to interest rate risk with respect to its investments in cash. The Company's policy is to invest cash at variable rates of interest and cash reserves are to be maintained in cash in order to maintain liquidity, while achieving a satisfactory return for shareholders. Fluctuations in interest rates when cash matures impact interest income earned.

As at June 30, 2023 and March 31, 2023, the Company's exposure to interest rate risk was nominal.

#### Price risk

Equity price risk is defined as the potential adverse impact on the Company's earnings due to movements in individual equity prices or general movements in the level of the stock market. The Company is subject to price risk in respect of its investments in marketable securities.

As at June 30, 2023 and March 31, 2023, the Company's exposure to price risk was not significant in relation to these Financial Statements.



## **AMARC RESOURCES LTD.**

**MANAGEMENT'S DISCUSSION AND ANALYSIS**

**FOR THE THREE MONTHS ENDED JUNE 30, 2023**

**AMARC RESOURCES LTD.**

**MANAGEMENT'S DISCUSSION AND ANALYSIS FOR  
THE THREE MONTHS ENDED JUNE 30, 2023**

---

1.1	DATE .....	1
1.2	OVERVIEW.....	2
1.3	SELECTED ANNUAL INFORMATION .....	26
1.4	SUMMARY OF QUARTERLY RESULTS.....	26
1.5	RESULTS OF OPERATIONS .....	27
1.6	LIQUIDITY .....	28
1.7	CAPITAL RESOURCES .....	28
1.8	OFF-BALANCE SHEET ARRANGEMENTS.....	29
1.9	TRANSACTIONS WITH RELATED PARTIES.....	29
1.10	PROPOSED TRANSACTIONS.....	30
1.11	CRITICAL ACCOUNTING ESTIMATES.....	30
1.12	CHANGES IN ACCOUNTING POLICIES INCLUDING INITIAL ADOPTION .....	30
1.13	FINANCIAL INSTRUMENTS AND OTHER INSTRUMENTS.....	30
1.14	OTHER MD&A REQUIREMENTS.....	30
1.14.1	ADDITIONAL DISCLOSURE FOR VENTURE ISSUERS WITHOUT SIGNIFICANT REVENUE	30
1.14.2	DISCLOSURE OF OUTSTANDING SHARE DATA .....	31
1.14.3	DISCLOSURE CONTROLS AND PROCEDURES.....	31
1.14.4	INTERNAL CONTROLS OVER FINANCIAL REPORTING PROCEDURES.....	31
1.14.5	LIMITATIONS OF CONTROLS AND PROCEDURES.....	32
1.15	RISK FACTORS.....	32

---



## AMARC RESOURCES LTD.

### MANAGEMENT'S DISCUSSION AND ANALYSIS FOR THE THREE MONTHS ENDED JUNE 30, 2023

---

#### 1.1 DATE

This Management's Discussion and Analysis ("MD&A") should be read in conjunction with the audited consolidated financial statements (the "Annual Financial Statements") of Amarc Resources Ltd. ("Amarc", or the "Company") for the year ended March 31, 2023, and the unaudited condensed consolidated interim financial statements (the "Financial Statements") of the Company for the three months ended June 30, 2023, both which are publicly available on SEDAR at [www.sedar.com](http://www.sedar.com). All monetary amounts herein are expressed in Canadian Dollars ("CAD") unless otherwise stated.

The Company reports in accordance with International Financial Reporting Standards as issued by the International Accounting Standards Board ("IASB") and interpretations of the IFRS Interpretations Committee (together known as "IFRS"). The following disclosure and associated Financial Statements are presented in accordance with IFRS.

This MD&A is prepared as of August 28, 2023.

#### *Cautionary Note to Investors Concerning Forward-looking Statements*

*This news release includes certain statements that may be deemed "forward-looking statements". All such statements, other than statements of historical facts that address exploration plans and plans for enhanced relationships are forward-looking statements. Although the Company believes the expectations expressed in such forward-looking statements are based on reasonable assumptions, such statements are not guarantees of future performance and actual results or developments may differ materially from those in the forward-looking statements. Assumptions used by the Company to develop forward-looking statements include the following: Amarc's projects will obtain all required environmental and other permits and all land use and other licenses, studies and exploration of Amarc's projects will continue to be positive, and no geological or technical problems will occur. Factors that could cause actual results to differ materially from those in forward-looking statements include market prices, potential environmental issues or liabilities associated with exploration, development and mining activities, exploitation and exploration successes, continuity of mineralization, uncertainties related to the ability to obtain necessary permits, licenses and tenure and delays due to third party opposition, changes in and the effect of government policies regarding mining and natural resource exploration and exploitation, exploration and development of properties located within Aboriginal groups asserted territories may affect or be perceived to affect asserted aboriginal rights and title, which may cause permitting delays or opposition by Aboriginal groups, continued availability of capital and financing, and general economic, market or business conditions. Investors are cautioned that any such statements are not guarantees of future performance and actual results or developments may differ materially from those projected in the forward-looking statements. For more information on Amarc Resources Ltd., investors should review Amarc's annual Form 20-F filing with the United States Securities and Exchange Commission at [www.sec.gov](http://www.sec.gov) and its home jurisdiction filings that are available at [www.sedar.com](http://www.sedar.com).*

MANAGEMENT’S DISCUSSION AND ANALYSIS

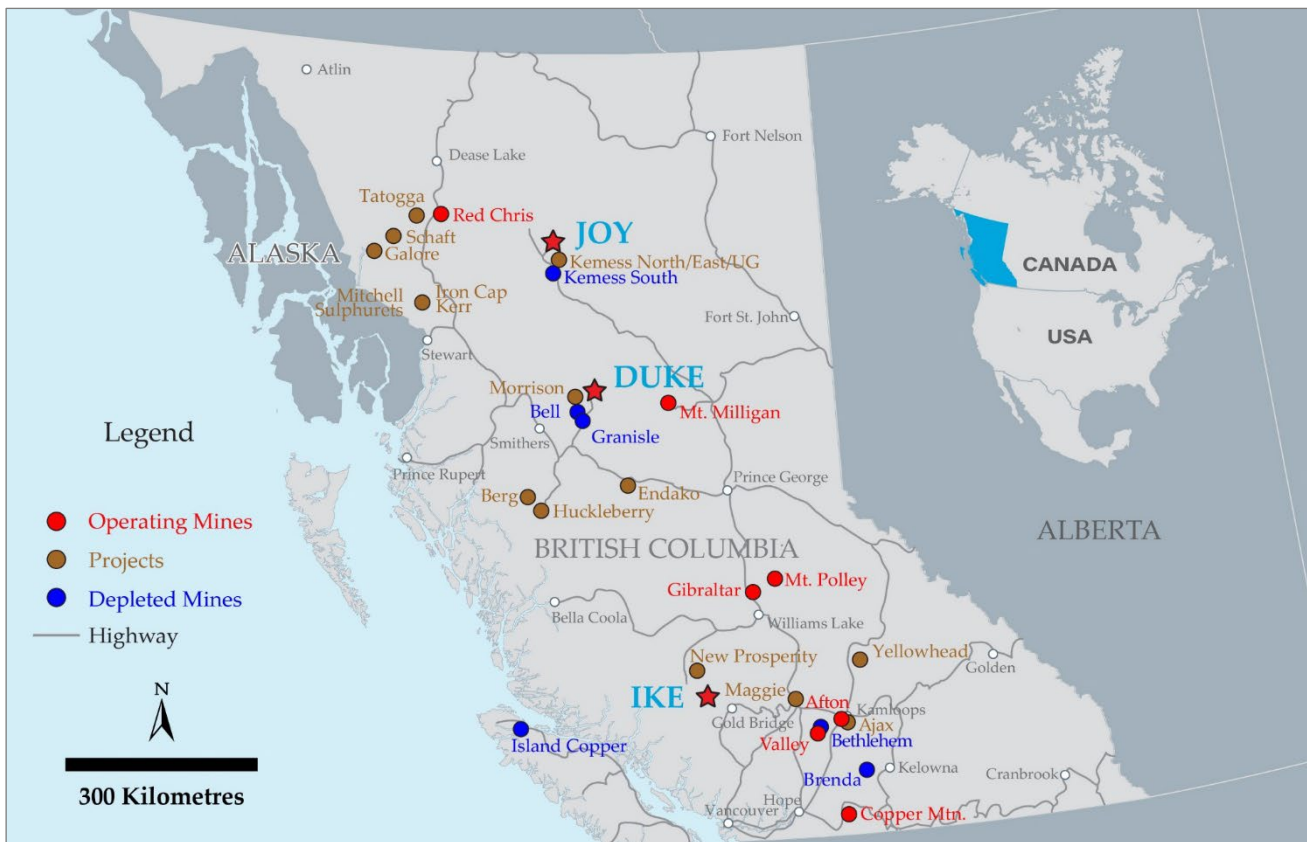
FOR THE THREE MONTHS ENDED JUNE 30, 2023

1.2 OVERVIEW

Amarc is a mineral exploration and development company with an experienced and successful management team focused on developing a new generation of long life, high value British Columbia (“BC”) porphyry copper-gold (“Cu-Au”) mines. By combining high demand projects with successful management, Amarc has created a solid platform to create value from its exploration and development stage assets.

Amarc is advancing its **JOY**, **DUKE** and **IKE** porphyry Cu±Au deposit districts located in northern, central and southern BC, respectively. The JOY, DUKE and IKE Districts represent significant potential for the development of multiple and important-scale, porphyry Cu±Au deposits. Importantly, each of the three districts is located in proximity to industrial infrastructure – including power, highways and rail.

LOCATION OF THE COMPANY’S JOY, DUKE and IKE DISTRICTS



Amarc’s 100%-owned, 495 km<sup>2</sup> **JOY District** covers the northern extension of the prolific Kemess porphyry Cu-Au district (the “Kemess District”) in the Toodoggone region of north-central BC. A geological region with high potential for important porphyry and epithermal deposits, the Toodoggone is part of BC’s Golden Horseshoe, which includes the Golden Triangle to the west.

## AMARC RESOURCES LTD.

### MANAGEMENT'S DISCUSSION AND ANALYSIS

#### FOR THE THREE MONTHS ENDED JUNE 30, 2023

---

The JOY claims are located approximately 20 km north of the former Kemess South Mine and the government approved Kemess underground project ("Kemess District"), owned by, Centerra Gold Inc. ("Centerra") which purchased the Kemess District from AuRico Metals Inc. for \$310 million<sup>1</sup> in mid 2017. Amarc's JOY District is host to the open-ended PINE porphyry Cu-Au deposit (the "PINE Deposit") and a pipeline of other large and high potential, district porphyry Cu-Au targets, which cluster on the property.

Amarc has entered into an alliance with Freeport-McMoRan Minerals Properties Canada Inc. ("Freeport"), a wholly owned subsidiary of Freeport-McMoRan Inc., to efficiently advance the JOY District. Under the terms of the agreement Freeport may acquire up to a 70% ownership interest by making staged investments totalling \$110 million. Freeport increased its Year 1 contribution in the 2021 JOY exploration program by ~50% – from \$4 million to \$5.94 million and is continuing its earn-in on the JOY District having completed a second drilling season funding approximately \$14 million in 2022 for its Year 2 contribution. Amarc is the project operator.

The Amarc exploration team completed 15,427 m of helicopter-supported drilling and extensive surface surveys at JOY in 2022, identifying several mineralized trends across the JOY District and indicating the potential for clustered porphyry deposits that remain to be fully explored. In addition, the mineralization at the PINE Deposit was expanded over 1,700 m, substantial new porphyry Cu-Au mineralization was discovered at the largely overburden covered Canyon deposit target; and widely spaced initial scout drilling of the Twins sulphide system encountered widespread porphyry Cu-Au mineralization, highlighting significant exploration potential.

In late May 2023, Amarc launched an exploration program that includes extensive airborne and surface surveys focused on the detailed refinement of multiple porphyry Cu-Au deposit targets clustered along the mineralized trends that extend over the 495 km<sup>2</sup> property, in preparation for an extensive intended drilling program in 2024. This year's program will also include rehabilitation of road and bridge access to the PINE Cu-Au Deposit in the centre of the JOY tenure and other deposit targets to facilitate the ongoing detailed work and future drilling. The program is fully funded by Freeport. The Company has the required IP permit in hand for the work program.

Amarc's 678 km<sup>2</sup> **DUKE District** is located 80 km northeast of Smithers within the broader Babine Region, one of BC's most prolific porphyry Cu-Au belts. The Babine Region, a 40 by 100 km north-northwesterly striking mineralized belt is host to Noranda Mines' past producing Bell and Granisle Cu-Au mines that produced a total of 1.1 billion pounds of Cu, 634,000 ounces of Au and 3.5 million ounces of Ag<sup>2</sup>, and the advanced stage Morrison Cu-Au deposit. The DUKE District includes both the DUKE porphyry Cu deposit discovery and a series of high potential porphyry Cu-Au deposit targets generated from the Company's comprehensive district scale targeting programs.

In late calendar 2022, Amarc entered into a funding agreement on the DUKE District with Boliden Mineral Canada Ltd. ("Boliden"), a wholly-owned subsidiary of the Boliden Group. Under the terms of the Agreement, Boliden may earn up to a 70% ownership interest, by making staged exploration and development investments totalling \$90 million. Boliden can earn an initial 60% interest by funding \$30 million of exploration and development expenditures within four years of the effective date of the Agreement, of which CDN\$5 million is a committed amount. Boliden is to invest \$10 million through to the end of 2023. Amarc is the project operator.

---

<sup>1</sup> Centerra Gold Inc. news release January 8, 2018.

<sup>2</sup> MINFILE Number 093L 146 and 093M 001 MINFILE Production Detail Report, BC Geological Survey, Ministry of Energy and Mines, BC.

**MANAGEMENT'S DISCUSSION AND ANALYSIS**  
**FOR THE THREE MONTHS ENDED JUNE 30, 2023**

---

Having concluded the Boliden agreement, Amarc initiated delineation drilling at the DUKE Deposit completing 11,070 m between early December 2022 and mid-March 2023. This drilling increased the size of the DUKE Deposit porphyry Cu-Mo-Ag-Au system, and also Amarc's understanding of the controls on mineralization in the DUKE District. In May 2023, Amarc remobilized its exploration team to commence extensive airborne and ground exploration surveys designed to assess 16 prioritized porphyry Cu-Au targets across the DUKE District to define targets for winter 2023-2024 drill testing. The Company has the required drill and IP permits in hand for the work programs.

The 462 km<sup>2</sup> **IKE District**, also 100% owned by Amarc, is located 33 km northwest of the historical mining community of Gold Bridge near the heartland of BC's producing porphyry Cu mines. The greater IKE District includes Amarc's porphyry Cu-Mo-Ag deposit discovery (the "IKE Deposit"); the high potential Greater Empress Cu-Au Project (the "Greater Empress" area) that hosts the Empress Cu-Au-Ag deposit (the "Empress Deposit") and other significant porphyry Cu-Au-Mo-Ag and Cu-Au-Ag replacement deposit targets; and also a number of promising porphyry Cu and epithermal Au-Ag targets. The IKE District shares many characteristics with porphyry districts around the globe that host major, and commonly multiple, Cu±Au±Mo±Ag deposits and has the potential to develop into an important mining camp.

Subject to funding Amarc is also now planning programs to be undertaken in 2024:

- A well-planned core drilling program at the Empress Deposit to expand the higher grade Cu-Au mineralization which remains open;
- An integrated program in the Greater Empress area to drill test high potential drill-ready targets and survey work on other promising targets to bring them also to a drill ready status; and
- A drill program at the IKE Deposit with the goal to further expand the deposit and establish a mineral resource.

The Company has the required drill and IP permits in hand for the proposed work programs.

Amarc works closely with local governments, indigenous groups and other stakeholders in order to advance its mineral projects responsibly, and to do so in a manner that contributes to sustainable community and economic development. We pursue early and meaningful engagement to ensure our mineral exploration and development activities are well coordinated and broadly supported, address local priorities and concerns, and optimize opportunities for collaboration. In particular, we seek to establish mutually beneficial partnerships with indigenous groups within whose traditional territories Amarc projects are located, through the provision of jobs, training programs, contract opportunities, capacity funding agreements and sponsorship of community events. All Amarc's work programs are carefully planned to achieve high levels of environmental and social performance.

### **The JOY Cu-Au District**

Amarc's 100%-owned 495 km<sup>2</sup> **JOY District** covers the northern extension of the prolific Kemess porphyry Cu-Au district (the "Kemess District") in the Toodoggone region of north-central BC (see May 15, 2020 news release and the Company's website at [www.amarcresources.com/projects/joy-project](http://www.amarcresources.com/projects/joy-project)). A geological region with high potential for important porphyry and epithermal deposits, the Toodoggone is part of BC's Golden Horseshoe, which includes the Golden Triangle to the west.

Through its association with HDI, Amarc's technical team was first to recognize the Kemess District's true porphyry potential, acquiring both Kemess North and Kemess South as early-stage prospects and

**MANAGEMENT'S DISCUSSION AND ANALYSIS  
FOR THE THREE MONTHS ENDED JUNE 30, 2023**

---

advancing both to significant porphyry Cu-Au deposits. Kemess South was sold on beneficial terms to a predecessor of Northgate Minerals, which brought the deposit into production. Northgate Minerals produced 3 million ounces of Au, and 750 million pounds of Cu over a 13-year period to 2011<sup>3</sup> from Kemess South mine (BC's third largest Au producer). The southern area of the Kemess District, now owned by Centerra, includes the government-approved Kemess Underground Project (the deeper higher-grade extension of the Kemess North deposit), the advanced stage Kemess East deposit as well as the mined-out Kemess South deposit. The resource road that services Centerra's deposits and the historical Lawyers and Shasta Au-Ag mines, also provides access to Amarc's JOY District.

### ***JOY District Highlights***

The PINE Deposit in the JOY District has seen several phases of historical drilling. Early work by Amarc identified significant expansion potential at both the PINE Deposit and the MEX deposit target that required drill testing. In addition, Amarc defined seven large (approximately 1 to 5 km<sup>2</sup>), high potential porphyry Cu-Au exploration target areas, each of which hosts multiple targets that were either drill-ready, or could rapidly be brought up to a drill ready status by the completion of focused surface surveys. A highly effective targeting strategy was initially achieved by combining and interpreting information from the Company's exploration surveys and extensive historical datasets. These datasets include results from soil geochemical sample grids, airborne magnetics and ground Induced Polarization ("IP") geophysical surveys, geological and alteration mapping and historical drilling. The large historical soils geochemical database (6,390 samples) was of particular use.

The JOY technical information up and including 2020 is summarized in the Company's National Instrument 43-101 Technical Report ("JOY Technical Report") filed under Amarc's profile at [www.sedar.com](http://www.sedar.com) and on the Company's website at [www.amarcresources.com/projects/joy-project/technical-report](http://www.amarcresources.com/projects/joy-project/technical-report).

In 2021, Amarc work crews completed a comprehensive exploration program at JOY, which was designed to advance the PINE Deposit delineation and assess several of the defined important-scale mineral systems (Amarc release November 15, 2021). This program included the drilling of 4,300 m (9 core holes) and the relogging of over 60 historical core drill holes mainly from the PINE porphyry Cu-Au deposit, along with 42 line-km of IP geophysical survey, 684 grid soil geochemical samples and 179 rock geochemical samples collected during geological traverses over a number of the target areas.

During the 2022 field season Amarc completed 15,427 m (37 core holes) of helicopter supported drilling with the goal of expanding the known mineralization at the PINE Deposit, while commencing drill testing of a number of deposit scale Cu-Au targets clustered across the JOY District (Amarc releases October 11, 2022 and March 2, 2023). In addition, further ground survey work that included 56.3 line-km of IP geophysics and the collection of 2,648 soil and 313 surface rock samples for geochemical analyses, was undertaken. These survey results integrated with previously completed Amarc and historical survey data continued to discover and expand clusters of large sulphide-bearing hydrothermal systems delineating new targets for drill testing (Amarc release January 23, 2023).

### **Expanding the PINE Porphyry Cu-Au Deposit**

Building on information derived mainly from the team's relogging of the historical core, Amarc completed

---

<sup>3</sup> SRK Consulting (Canada) Inc. 2013 NI-43-101 Technical Report on the Kemess Underground Project, British Columbia, Canada, AuRico Metals Ltd. Sedar

**MANAGEMENT'S DISCUSSION AND ANALYSIS**  
**FOR THE THREE MONTHS ENDED JUNE 30, 2023**

---

in 2021 its first ever drilling at the **PINE Deposit**, which comprised three long core holes (up to 701 m in length) (Amarc release March 7, 2022). These holes intercepted significant mineralization over a strike length of 1,100 m and to a vertical depth of at least 550 m (Amarc release March 7, 2022), within an expansive 6 km<sup>2</sup> hydrothermal mineralizing system as outlined by IP geophysical surveys. Notably, the PINE system remained open to expansion, with most of this prospective area concealed under a cover of broadly distributed glacial deposits.

Amarc's 2021 drill holes at the PINE Deposit intercepted some of the highest grade of Cu-Au mineralization over the longest intervals encountered to date. Highlights from this 2021 PINE Deposit core drilling include:

- 101.90 m of 0.56% CuEQ<sup>4</sup> (0.23% Cu, 0.57 g/t Au and 2.4 g/t Ag)
- 29.00 m of 0.46% CuEQ (0.20% Cu, 0.44 g/t Au and 2.1 g/t Ag)
- 66.60 m of 0.40% CuEQ (0.21% Cu, 0.32 g/t Au and 1.5 g/t Ag)
- 244.10 m of 0.35% CuEQ (0.11% Cu, 0.41 g/t Au and 1.2 g/t Ag)
- 135.00 m of 0.44% CuEQ (0.14% Cu, 0.53 g/t Au and 1.2 g/t Ag)

<sup>4</sup> See Table 1, Note 4 - *copper equivalent (CuEQ) calculations use metal prices of: Cu US\$4.00/lb, Au US\$1,800.00/oz, and Ag US\$24.00/oz and conceptual recoveries of: Cu 85%, Au 72% and 67% Ag.*

A majority of the 60+ mainly short and, frequently, widely spaced historical core holes at the PINE Deposit (80% of which extend to <200 m vertical depth) are collared within a restricted 900 x 600 m area. Reinterpretation of historical drill holes and the new holes drilled by Amarc showed good potential to expand the PINE Deposit internally (between the widely spaced drill holes), laterally (beyond the footprint of current drilling) and to depth.

Further to the open-ended nature of the PINE Deposit, significant potential for the discovery of other centres of porphyry Cu-Au mineralization within the area of the overall PINE mineralized system were also identified. Amarc's hole JP21009, located 500 m northeast of the PINE Deposit, returned 244 m of 0.35% CuEQ<sup>4</sup> (0.11% Cu, 0.41 g/t Au and 1.2 g/t Ag), including 135 m of 0.44% CuEQ (0.14% Cu, 0.53 g/t Au and 1.2 g/t Ag), indicating high potential to the northeast. Historical drilling also indicated significant potential to the southwest of the PINE Deposit. For example, the historical hole located furthest away to the southwest but within the current known limits of the PINE system (PIN09-04) returned 105 m at 0.17% CuEQ (0.08% Cu, 0.15 g/t Au and 1.1 g/t Ag) (Amarc release March 7, 2022).

The eleven core holes (up to 781 m in length) completed at the PINE Deposit in 2022 were located to follow up on the successful 2021 drilling: to further expand the mineralization at the deposit and to identify areas of higher grade within the expansive 6 km<sup>2</sup> PINE mineralized system (Amarc releases August 24, 2022 and March 2, 2023). This drilling successfully intercepted significant mineralization that extended the footprint of the deposit over a strike length of 1,700 m (Table 1 and Amarc release March 2, 2023). Furthermore, outboard, wider spaced and mainly historical drilling indicates the potential to expand this footprint to over 2,600 m. In addition, the drilling is highlighting the favorable geometry of the PINE Deposit, with the majority of known mineralization occurring from surface to 300 m depth, and locally extending to 550 m depth. The larger 6 km<sup>2</sup> mineralized system that hosts the PINE Deposit, and its expansion potential remains to be fully explored.

Highlights from 2022 PINE Deposit drilling include:

- 204 m of 0.42% CuEQ<sup>4</sup> (0.18% Cu, 0.41 g/t Au and 2.3 g/t Ag)

**AMARC RESOURCES LTD.**

**MANAGEMENT'S DISCUSSION AND ANALYSIS**

**FOR THE THREE MONTHS ENDED JUNE 30, 2023**

- 105 m of 0.40% CuEQ (0.13% Cu, 0.47 g/t Au and 2.3 g/t Ag)
- 107 m of 0.31% CuEQ (0.09% Cu, 0.37 g/t Au and 1.2 g/t Ag)
- 179 m of 0.32% CuEQ (0.11% Cu, 0.36 g/t Au and 1.2 g/t Ag)

Notably, additional centers of higher Cu-Au grade are beginning to emerge along the 1,700 m PINE Deposit trend. For example, Amarc drilling in the northeastern area of this trend has intersected significant porphyry mineralization over 600 m of strike length, including:

- 63 m of 0.44% CuEQ<sup>4</sup>, within 179 m of 0.32% CuEQ (JP22017)<sup>5</sup>
- 57 m of 0.40% CuEQ, within 107 m of 0.31% CuEQ (JP22015)
- 135 m of 0.44% CuEQ, within 244 m of 0.35% CuEQ (JP21009 completed in 2021)

<sup>5</sup> Grade for each element that comprises the CuEQ for holes JP22017, JP22015 are shown in Table 1 and for JP21009 is 0.14% Cu, 0.53 g/t Au and 1.2 g/t Ag.

**Table 1: JOY 2022 DRILL PROGRAM ASSAY RESULTS**

Target	Drill Hole <sup>5</sup>	Azim (°)	Dip (°)	EOH (m)	Incl.		From (m)	To (m)	Int. <sup>123</sup> (m)	CuEQ <sup>4</sup> (%)	Cu (%)	Au (g/t)	Ag(g/t)
PINE	JP22010	265	-60	681.00	Incl. Incl. and and Incl.		18.96	223.03	204.07	0.42	0.18	0.41	2.3
							18.96	49.35	30.39	0.44	0.12	0.55	2.0
							84.83	223.03	138.20	0.48	0.22	0.43	2.8
							84.83	128.95	44.12	0.58	0.26	0.53	3.3
							141.82	223.03	81.21	0.51	0.24	0.45	2.9
							258.00	296.70	38.70	0.51	0.25	0.44	2.7
							258.00	285.81	27.81	0.62	0.29	0.54	3.3
	455.51	505.79	50.28	0.34	0.15	0.32	1.7						
PINE	JP22011	265	-60	637.78	Incl. Incl.		35.00	65.00	30.00	0.22	0.06	0.27	1.5
							386.00	542.00	156.00	0.36	0.20	0.25	2.5
							386.00	458.00	72.00	0.44	0.23	0.35	2.9
							494.00	539.00	45.00	0.41	0.24	0.25	2.8
PINE	JP22012	265	-60	597.00	Incl. Incl.		41.50	54.52	13.02	0.26	0.12	0.22	2.0
							73.00	141.00	68.00	0.31	0.13	0.29	2.0
							126.00	141.00	15.00	0.49	0.20	0.49	2.7
							221.40	354.00	132.60	0.32	0.15	0.26	2.4
							221.40	301.48	80.08	0.35	0.17	0.30	2.7
PINE	JP22013	265	-60	516.00	Incl. Incl. Incl.		48.00	153.00	105.00	0.40	0.13	0.47	1.8
							59.20	96.00	36.80	0.44	0.16	0.48	2.3
							114.00	153.00	39.00	0.46	0.12	0.59	1.4
							177.00	189.51	12.51	0.42	0.12	0.52	1.3
							226.14	303.00	76.86	0.30	0.14	0.27	1.4
							226.14	245.41	19.27	0.45	0.14	0.54	1.4
PINE	JP22014	270	-60	594.00	Incl. Incl.		27.00	42.00	15.00	0.28	0.10	0.31	1.3
							62.05	167.00	104.95	0.25	0.10	0.26	1.3
							66.00	84.00	18.00	0.34	0.11	0.40	1.2
							111.00	141.00	30.00	0.33	0.12	0.37	1.7
PINE	JP22015	90	-60	647.00			72.00	300.00	228.00	0.25	0.08	0.28	1.0

AMARC RESOURCES LTD.

MANAGEMENT'S DISCUSSION AND ANALYSIS

FOR THE THREE MONTHS ENDED JUNE 30, 2023

Target	Drill Hole <sup>5</sup>	Azim (°)	Dip (°)	EOH (m)	Incl.		From (m)	To (m)	Int. <sup>123</sup> (m)	CuEQ <sup>4</sup> (%)	Cu (%)	Au (g/t)	Ag(g/t)
					<i>Incl.</i>		72.00	178.78	106.78	0.31	0.09	0.37	1.2
					<i>and</i>		72.00	129.00	57.00	0.40	0.10	0.53	1.3
					<i>and</i>		72.00	84.00	12.00	0.81	0.16	1.15	2.0
					<i>Incl.</i>		189.00	300.00	111.00	0.21	0.08	0.22	0.8
							431.97	647.00	215.03	0.22	0.10	0.21	0.8
					<i>Incl.</i>		522.00	534.00	12.00	0.47	0.10	0.64	1.6
					<i>and</i>		561.00	644.55	83.55	0.24	0.12	0.20	0.9
PINE	JP22016	265	-65	609.00			13.23	155.56	142.33	0.26	0.08	0.30	1.1
					<i>Incl.</i>		18.00	66.00	48.00	0.41	0.12	0.50	1.4
							175.51	186.33	10.82	0.30	0.12	0.31	1.4
							213.36	232.07	18.71	0.22	0.12	0.17	1.4
							241.78	258.00	16.22	0.29	0.10	0.32	1.2
PINE	JP22017	90	-60	624.00			174.00	352.80	178.80	0.32	0.11	0.36	1.2
					<i>Incl.</i>		248.03	352.80	104.77	0.37	0.13	0.43	1.1
					<i>and</i>		272.72	336.00	63.28	0.44	0.14	0.52	1.2
					<i>and</i>		272.72	291.00	18.28	0.56	0.12	0.76	1.5
					<i>Incl.</i>		310.00	336.00	26.00	0.45	0.17	0.49	1.2
							378.00	390.00	12.00	0.30	0.12	0.30	1.3
PINE	JP22018	265	-60	490.50			126.00	177.00	51.00	0.38	0.13	0.4	1.8
PINE	JP22034	90	-60	504.00			59.67	95.08	35.41	0.14	0.05	0.14	0.3
							124.71	145.17	20.46	0.24	0.13	0.20	0.8
							174.13	231.00	56.87	0.24	0.14	0.17	1.6
							423.32	477.33	54.01	0.13	0.07	0.10	0.9
PINE	JP22040	270	-90	405.00			<i>No significant intercepts</i>						
Canyon	JP22029	40	-60	234.00			<i>No significant intercepts</i>						
Canyon	JP22030	55	-60	753.00			102.00	126.00	24.00	0.13	0.07	0.10	0.5
							223.85	255.00	31.15	0.14	0.10	0.04	3.3
							291.00	342.00	51.00	0.13	0.10	0.04	0.8
							342.00	638.25	296.25	0.39	0.30	0.14	1.7
					<i>Incl.</i>		345.21	456.00	110.79	0.48	0.38	0.16	2.5
	JP22030				<i>Incl.</i>		351.00	447.00	96.00	0.51	0.39	0.18	2.6
							360.00	399.00	39.00	0.56	0.42	0.20	2.7
					<i>Incl.</i>		552.00	580.00	28.00	0.51	0.40	0.19	1.4
							708.90	719.40	10.50	0.77	0.61	0.25	2.1
Canyon	JP22036	55	-60	588.00			24.47	219.00	194.53	0.20	0.14	0.09	2.3
					<i>Incl.</i>		69.00	76.00	7.00	0.91	0.54	0.59	6.9
					<i>Incl.</i>		162.30	177.00	14.70	0.33	0.22	0.18	2.1
							210.00	219.00	9.00	0.27	0.17	0.15	1.8
							407.00	464.00	57.00	0.17	0.12	0.08	0.8
Canyon	JP22038	55	-60	576.00			384.00	570.00	186.00	0.15	0.12	0.04	0.8
Canyon	JP22042	235	-70	661.30			299.40	564.00	264.60	0.15	0.11	0.06	0.8
					<i>Incl.</i>		318.00	347.61	29.61	0.23	0.16	0.12	1.1
					<i>Incl.</i>		453.00	498.00	45.00	0.20	0.15	0.07	0.9



AMARC RESOURCES LTD.

MANAGEMENT'S DISCUSSION AND ANALYSIS

FOR THE THREE MONTHS ENDED JUNE 30, 2023

Target	Drill Hole <sup>5</sup>	Azim (°)	Dip (°)	EOH (m)	Incl.		From (m)	To (m)	Int. <sup>123</sup> (m)	CuEQ <sup>4</sup> (%)	Cu (%)	Au (g/t)	Ag(g/t)
Canyon	JP22043	50	-60	735.00			582.00	726.00	144.00	0.16	0.13	0.03	0.8
Twins	JP22019	50	-60	384.00	Incl.		54.00	125.58	71.58	0.21	0.10	0.19	1.0
							99.00	125.58	26.58	0.29	0.12	0.30	1.2
							215.00	276.00	61.00	0.19	0.11	0.14	1.2
Twins	JP22020	235	-60	270.00	Incl.		12.00	216.00	204.00	0.11	0.03	0.14	0.4
							44.22	90.00	45.78	0.17	0.05	0.22	0.6
Twins	JP22021	55	-60	216.00		No significant intercepts							
Twins	JP22023	235	-60	36.00		Abandoned in overburden							
Twins	JP22025	50	-60	219.00			12.00	48.00	36.00	0.11	0.04	0.11	0.6
Twins	JP22026	55	-55	282.00		No significant intercepts							
Twins	JP22031	55	-60	249.00			60.00	105.00	45.00	0.10	0.04	0.11	0.3
SWT	JP22022	265	-55	528.00		No significant intercepts							
SWT	JP22024	225	-60	501.00			414.30	417.00	2.70	2.12	0.005	3.73	6.2
SWT	JP22027	70	-60	342.00			24.00	27.00	3.00	0.25	0.09	0.28	0.4
SWT	JP22028	70	-60	342.00	Incl.		264.00	342.00	78.00	0.08	0.02	0.11	0.4
							328.71	342.00	13.29	0.14	0.03	0.20	0.5
South MEX	JP22041	54.16	59.82	323.00	Incl.		101.00	173.00	72.00	0.10	0.02	0.10	3.4
							127.00	149.00	22.00	0.15	0.03	0.16	4.8
Wrich	JP22044	335	-70	393.00	Incl.		59.00	167.00	108.00	0.20	0.03	0.23	6.4
							65.00	86.00	21.00	0.32	0.04	0.32	13.6
							119.00	137.00	18.00	0.28	0.03	0.44	1.7
							158.00	167.00	9.00	0.34	0.02	0.46	10.2
Finlay North	JP22032	30	-60	225.00		No significant intercepts							
Finlay North	JP22033	30	-60	243.00			66.00	87.00	21.00	0.07	0.004	0.11	0.4
Finlay North	JP22035	30	-70	219.40		No significant intercepts							
Finlay South	JP22037	55	-60	221.00			17.00	29.00	12.00	0.14	0.10	0.06	2.0
Finlay South	JP22039	235	-50	356.00		No significant intercepts							
CT	JP22045	90	-60	204.00		No significant intercepts							

	>0.30% CuEQ
	0.15 – 0.30% CuEQ

Notes:

- Widths reported are drill widths, such that true thicknesses are unknown.
- All assay intervals represent length-weighted averages.
- Some figures may not sum exactly due to rounding.
- Copper equivalent (CuEQ) calculations use metal prices of: Cu US\$4.00/lb., Au US\$1800/oz. and Ag US\$24/oz. and conceptual recoveries of: Cu 85%, Au 72% and 67% Ag. Conversion of metals to an equivalent copper grade based on these metal prices is relative to the copper price per unit mass factored by conceptual recoveries for those metals normalized to the conceptualized copper recovery. The metal equivalencies for each metal are added to the copper grade. The general formula for this is:  $CuEQ\% = Cu\% + ((Au\ g/t * (Au\ recovery / Cu\ recovery) * (Au\ \$\ per\ oz. / 31.1034768 / Cu\ \$\ per\ lb. * 22.04623)) + ((Ag\ g/t * (Ag\ recovery / Cu\ recovery) * (Ag\ \$\ per\ oz. / 31.1034768 / Cu\ \$\ per\ lb. * 22.04623)))$
- The collar locations in UTM NAD83, Zone 9N coordinates for listed drill holes are provided in Amarc release March 2, 2023.

**MANAGEMENT'S DISCUSSION AND ANALYSIS**  
**FOR THE THREE MONTHS ENDED JUNE 30, 2023**

---

### **Discovery At Canyon Deposit Target Highlights Potential for Clustered Deposits at JOY**

Eight extensive porphyry Cu-Au deposit targets were explored in 2022 with 26 scout drill holes; four of the targets had not been previously drill tested. These deposit targets include the **Canyon** (5 km<sup>2</sup>), **Twins** (7 km<sup>2</sup>) and **SWT** (3 km<sup>2</sup>) which along with **PINE** (6 km<sup>2</sup>) form the 15.5 km northeast trending **PINE Trend**, and the **South Mex** (>1.9 km<sup>2</sup>) open deposit target at the south end of the 6 km-long **MEX Trend** (Amarc releases January 23, 2023 and March 2, 2023). These trends are similar to the 4 km-long northeast trend of the Nugget, Kemess North, Kemess Underground, Kemess Offset and Kemess East porphyry Cu-Au deposits in the Kemess Mining District held by Centerra Gold Inc., located adjacent to the south of the JOY tenure.

At **Canyon**, very limited initial scout drilling of the expansive (5 km<sup>2</sup>) and largely covered sulphide system by Amarc in 2021 (JP21006: 27 m of 0.18% CuEQ<sup>4</sup> with 0.06% Cu, 0.21 g/t Au) (see Amarc news release March 7, 2022) and historical operators (MEX12-013: 49 m of 0.16% CuEQ with 0.05% Cu, 0.20 g/t Au, and PIN09-15: 3 m of 11 g/t Au), intersected promising Cu-Au and Au-only mineralization compatible with the fringes of a potentially important porphyry Cu-Au system. In 2022, further reconnaissance drilling at Canyon discovered a significant new zone of porphyry Cu-Au mineralization with hole JP22030 intersecting:

- 96 m of 0.51% CuEQ<sup>4</sup> (0.39% Cu, 0.18 g/t Au and 2.6 g/t Ag), within 296 m of 0.39% CuEQ (0.30% Cu, 0.14 g/t Au and 1.7 g/t Ag)
- 5 m of 0.77% CuEQ (0.61% Cu, 0.25 g/t Au, 2.1 g/t Ag)

Four other scout drill holes intersected less robust Cu-Au mineralization disrupted by inter-mineral intrusions. The Canyon discovery remains open to expansion and requires substantial drilling, as does the host 5 km<sup>2</sup> IP geophysical anomaly which indicates the presence of a large-scale sulphide system.

The highly prospective **Twins** (7 km<sup>2</sup>) deposit target is located adjacent and to the southwest along the 15.5 km PINE Trend from Canyon. A single scout drill hole completed by Amarc in 2021 (JP21004), the first ever drilled into the large Twins target, intersected 63 m of 0.18% CuEQ<sup>4</sup> with 0.09% Cu, 0.15 g/t Au, 0.5 g/t Ag, including 39 m of 0.22% CuEQ with 0.11% Cu, 0.19 g/t Au, 0.6 g/t Ag, successfully discovering porphyry-type Cu-Au mineralization (Amarc release March 7, 2022) within this large mineralized sulphide system. In 2022, very widely spaced follow-up reconnaissance drill holes, ranging in length from 216 m to 384 m, targeted magnetic high features within the extensive IP chargeability footprint and encountered widespread indications of porphyry Cu-Au mineralization.

Based on comparisons with the Canyon discovery and the PINE Deposit, intervals of porphyry Cu-Au mineralization at Twins, including 27 m of 0.29% CuEQ<sup>4</sup> (0.12% Cu, 0.30 g/t Au, 1.2 g/t Ag) in JP22019 and 204 m of 0.11% CuEQ (0.04% Cu, 0.14 g/t Au, 0.4 g/t Ag) in JP22020, may represent the lateral or upper parts of a yet undiscovered porphyry Cu-Au center. The large footprint of this target, its veneer of glacial overburden cover, and Cu-Au intercepts in the widely spaced and relatively shallow drill holes highlight the significant exploration potential for the discovery of another porphyry Cu-Au deposit at Twins.

### **Systematic Exploration of Emerging Deposit Targets**

In 2022 a similar strategy of initial drill testing with single to widely spaced shorter scout drill holes was employed at other overburden-covered targets, including **South MEX**, **South Finlay**, **North Finlay** and **CT**, with results indicating continued systematic exploration is warranted. At **South MEX**, a single scout drill hole, the first in this >1.9 km<sup>2</sup> IP chargeability anomaly which remains open to expansion,

## AMARC RESOURCES LTD.

### MANAGEMENT'S DISCUSSION AND ANALYSIS

#### FOR THE THREE MONTHS ENDED JUNE 30, 2023

---

intersected anomalous Au-Cu-Ag (72 m of 0.10% CuEQ<sup>4</sup> (0.02% Cu, 0.10 g/t Au, 3.4 g/t Ag) in JP22041) in volcanics that straddle the prospective Triassic-Jurassic contact: a geological environment similar to that hosting the Kemess District porphyry Cu-Au deposits (Amarc releases January 23, 2023 and March 2, 2023).

Scout drilling at **SWT** returned local zones of anomalous Au-Cu compatible with proximity to a porphyry Cu-Au system (e.g. 78 m of 0.09% CuEQ<sup>4</sup> (0.02% Cu, 0.11 g/t Au, 0.04 g/t Ag) in JP22028), as well as local vein-hosted Au-only mineralization (2.7 m of 3.7 g/t Au in JP22024). At the adjacent Wrich occurrence, Au-Ag-Cu mineralization (108 m of 0.20% CuEQ (0.03% Cu, 0.23 g/t Au, 6.4 g/t Ag) in JP22044) is associated with advanced argillic alteration zones and may represent a higher-level signature of a porphyry Cu-Au system.

#### **JOY District Agreement with Freeport**

On May 12, 2021, Amarc announced it entered into an agreement (the "Agreement") with Freeport pursuant to which Freeport may acquire, through a staged two-stage option up to a 70% ownership interest in the mineral claims comprising the JOY District, plus other rights and interests, over up to a 10 year period.

To earn an initial 60% interest, Freeport is required to fund \$35 million of work expenditures over a 5-year term. During the first year of the earn-in, a \$4 million work program is required in the JOY District. Annual optional earn-in expenditures can be accelerated by Freeport at its discretion. Amarc will be operator during the initial earn-in period. Once Freeport has acquired such 60% interest, Amarc and Freeport will proceed to explore and develop the JOY District through a jointly owned corporation with Freeport assuming project operatorship.

Upon Freeport earning such 60% interest, it can elect, in its sole discretion, to earn an additional 10% in the mineral claims comprising the JOY District, plus other rights and interests (for a total 70% interest) by sole funding a further \$75 million within the following five years.

Once Freeport has finalized its earned ownership interest at either the 60% or 70% level, each party will be responsible for funding its own pro-rata share of project costs on a 60:40 or 70:30 basis.

On August 4, 2021, Amarc announced that Freeport had increased its first-year contribution to the Company's ongoing exploration program at the JOY District from \$4 million to \$5.5 million.

On November 15, 2021, Amarc announced that Freeport had further increased its first-year contribution to the Company's ongoing exploration program at the JOY District by ~50% – from \$4 million to \$5.94 million, and on December 15, 2021, announced that Freeport would continue their earn-in into the 2022 drill season.

During the year ended March 31, 2023, Amarc announced that Freeport continues to earn-in at JOY and is advancing approximately CDN\$14 million in calendar 2022 for its Year 2 contribution toward the JOY exploration program.

#### **JOY District Royalties**

The 100% Amarc owned JOY District comprises the JOY, PINE and Paula Properties, and also the STAKED Claims. The mineral claims comprising the STAKED Claims were staked and are owned 100% by the

## AMARC RESOURCES LTD.

### MANAGEMENT'S DISCUSSION AND ANALYSIS

#### FOR THE THREE MONTHS ENDED JUNE 30, 2023

---

Company.

On November 21, 2017, Amarc acquired 100% interest in the 7,200 Ha JOY Property from United Minerals Services Ltd., a private vendor. The JOY property is subject to an underlying 3% NSR royalty held by an underlying owner, which is capped at \$3.5 million.

On August 29, 2017, Amarc entered into option agreements with each of Gold Fields Toodoggone Exploration Corporation ("Gold Fields") and Cascadero Copper Corporation ("Cascadero"), which at that time held the PINE Property in a 51%:49% joint venture, that enabled Amarc to purchase 100% of the property. On December 31, 2018, Amarc completed the purchase of Cascadero's 49% interest in the PINE property (Amarc MD&A December 31, 2018). Further, on December 9, 2019, Amarc announced that it had reached an agreement with Gold Fields to amend the option agreement between the parties and purchased outright the remaining 51% of the PINE Property from Gold Fields (Amarc news release, December 9, 2019).

Gold Fields retains a 2.5% NPI royalty on mineral claims comprising about 96% of the PINE Property and a 1% NSR royalty on the balance of the claims. The NPI royalty can be reduced to 1.25% at any time through the payment to Gold Fields of \$2.5 million in cash or shares. The NSR royalty can be reduced to 0.50% through the payment to Gold Fields of \$2.5 million in cash or shares.

The PINE Property is subject to a 3% underlying NSR royalty payable from production to a former owner and capped at \$5 million payable from production (Amarc November 21, 2017 news release).

In November 2019, Amarc entered into a purchase agreement with two prospectors to acquire 100% of a single mineral claim, called the Paula Property, located internal to the wider JOY District tenure (Amarc MD&A December 31, 2019). The claim is subject to a 1% NSR royalty payable from commercial production that is capped at \$0.5 million.

#### The DUKE District

Amarc's **DUKE District** is located 80 km northeast of Smithers in the broader Babine Region, one of BC's most prolific porphyry Cu-Au belts. The Babine Region, a 40 by 100 km north to northwesterly striking mineralized belt is host to Noranda Mines' past producing Bell and Granisle Cu-Au mines that in the past produced a total of 1.1 billion pounds of Cu, 634,000 ounces of Au and 3.5 million ounces of Ag<sup>2</sup>, and the advanced stage Morrison Cu-Au deposit that is also held by another company. Amarc's DUKE porphyry Cu discovery is located 30 km north of the Bell Mine. Extensive infrastructure exists in the District, which primarily relates to the forestry industry but also dates back to mining activity.

The 678 km<sup>2</sup> DUKE District includes both the DUKE porphyry Cu deposit target discovery ("DUKE") and a series of high potential porphyry Cu-Au deposit targets generated from the Company's district-scale targeting program.

The DUKE technical information up and including 2020 is summarized from the Company's National Instrument 43-101 Technical Report (DUKE Technical Report) filed under Amarc's profile at [www.sedar.com](http://www.sedar.com) and on the Company's website at [www.amarcresources.com/projects/duke-project/technical-report](http://www.amarcresources.com/projects/duke-project/technical-report).

MANAGEMENT'S DISCUSSION AND ANALYSIS  
 FOR THE THREE MONTHS ENDED JUNE 30, 2023

---

**Expanding the DUKE Porphyry Cu Deposit**

The porphyry Cu system at **DUKE Deposit** had historically seen only limited drilling. Many of the 21 historical shallow and closely spaced core holes intersected and ended in significant Cu-Mo-Ag-Au mineralization (see Amarc's Company's National Instrument 43-101 Technical Report). In the main area of known mineralization, these holes extended to only 124 m vertical depth from surface.

This historical drilling was centered within a restricted part of a robust, 4.7 km historical IP chargeability anomaly, which is thought to have been offset by faulting. When reconstructed, this IP chargeability anomaly has a classic donut shape that was the target of Amarc's eight core holes completed in 2017 through 2018 (see December 19, 2017 and June 12, 2018 news releases).

Seven of the eight core holes drilled over an area measuring approximately 400 m north-south by 600 m east-west successfully intersected porphyry Cu-style mineralization to a vertical depth of 360 m. This mineralization remains open to expansion.

Notably, a single step-out hole (DK18004) completed by Amarc in 2018 more than 1 km to the north of the seven other Amarc holes, and within the displaced portion of the IP chargeability anomaly, intersected substantial lengths of moderate to low grade Cu and Mo mineralization, confirming a potential extensive lateral dimension to the DUKE porphyry Cu system.

Between early December 2022 and mid-March 2023 Amarc completed 24 core drill holes (11,086 m) in 80 drill days (Table 2 and Amarc release June 15, 2023). Two drill rigs focused on further delineating the DUKE Cu-Mo-Ag-Au Deposit, while a third rig tested the shallow overburden covered 4.7 km<sup>2</sup> IP anomaly surrounding the DUKE Deposit which is indicative of an expansive mineralized system.

Highlights from the 2022-2023 drilling at the DUKE Deposit include:

- 183 m of 0.43% CuEQ<sup>4</sup> (0.31% Cu, 0.019% Mo, 0.07 g/t Au, 1.5 g/t Ag) in hole DK22009
- 217 m of 0.45% CuEQ (0.33% Cu, 0.018% Mo, 0.08 g/t Au, 1.5 g/t Ag) in hole DK22010
- 30 m of 0.47% CuEQ (0.36 % Cu, 0.015% Mo, 0.06 g/t Au, 3.2 g/t Ag) in hole DK23012
- 30 m of 0.43% CuEQ (0.31% Cu, 0.014% Mo, 0.09 g/t Au, 1.6 g/t Ag), and
- 33 m of 0.44% CuEQ (0.20% Cu, 0.053% Mo, 0.06 g/t Au, 1.3 g/t Ag) in hole DK23015
- 82 m of 0.41% CuEQ (0.30% Cu, 0.017% Mo, 0.06 g/t Au, 1.1 g/t Ag) in hole DK23022
- 36 m of 0.47% CuEQ (0.34% Cu, 0.024% Mo, 0.06 g/t Au, 1.5 g/t Ag) in hole DK23024
- 33 m of 0.40% CuEQ (0.30% Cu, 0.017% Mo, 0.05 g/t Au, 1.5 g/t Ag) in hole DK23026

<sup>4</sup> See Table 2, Note 4 - copper equivalent (CuEQ) calculations use metal prices of: Cu US\$4.00/lb, Mo US\$15.00/lb, Au US\$1,800.00/oz, and Ag US\$24.00/oz and conceptual recoveries of: Cu 85%, Mo 82%, Au 72% and 67% Ag.

Of the 24 holes drilled, 16 widely spaced drill holes (7,552 m) were completed to further delineate the DUKE Deposit. These holes have increased the size of the DUKE Deposit porphyry Cu-Mo-Ag-Au system, and also Amarc's understanding of the controls on mineralization in the DUKE District. An exploration template has been developed to effectively screen and advance the additional 16 priority exploration targets within the extensive 678 km<sup>2</sup> DUKE District tenure. This rapid advance in understanding the controls on mineralization at the DUKE Deposit provides a higher probability of success in these regional target areas.

**AMARC RESOURCES LTD.**

**MANAGEMENT'S DISCUSSION AND ANALYSIS**

**FOR THE THREE MONTHS ENDED JUNE 30, 2023**

Drill holes at the DUKE Deposit were sited on a nominal 200 m grid as step-outs from previous Amarc drilling. These holes confirmed that the DUKE Deposit extends to depths of at least 600 m, and also expanded the deposit footprint laterally to over 650 m north-south by 800 m east-west. In addition, ongoing detailed geological interpretation and modelling indicates strong potential for further expansion of the deposit laterally, and especially to the east. A notable characteristic of the porphyry Cu-Mo-Ag-Au mineralization in these widely spaced holes is the presence of zones of higher grade mineralization within broader envelopes of comparatively moderate grade. Significant potential exists with further drilling, for the definition of internal higher grade zones.

The DUKE Deposit consists of a series of Babine porphyry intrusions which were emplaced into volcanic and sedimentary rocks. The resulting contact zones are characterized by elevated Cu-Mo grades, often over several tens of metres in width, in both the intrusions and the adjacent volcanic and sedimentary rocks. The extension of significant Cu-Mo mineralization from the intrusions into the enclosing volcanic and sedimentary rocks greatly expands the DUKE Deposit volume potential.

**Table 2: DUKE 2022-2023 DRILL PROGRAM ASSAY RESULTS**

**DUKE Deposit Drill Holes**

Drill Hole <sup>5</sup>	Azim (°)	Dip (°)	EOH (m)	Incl.	From (m)	To (m)	Int. <sup>1,2,3</sup> (m)	CuEQ <sup>4</sup> (%)	Cu (%)	Mo (%)	Au (g/t)	Ag (g/t)
DK22009	0	-90	551		9.40	551.00	<b>541.60</b>	0.33	0.24	0.016	0.04	1.2
				Incl.	9.40	247.62	<b>238.22</b>	0.39	0.29	0.016	0.06	1.4
				and	65.00	247.62	<b>182.62</b>	0.43	0.31	0.019	0.07	1.5
				and	122.00	247.62	<b>125.62</b>	0.52	0.38	0.024	0.08	1.8
				and	128.00	161.00	33.00	0.59	0.42	0.028	0.10	1.8
				and	176.00	245.00	69.00	0.57	0.42	0.023	0.09	2.1
				Incl.	289.88	376.90	87.02	0.36	0.25	0.020	0.05	1.5
				and	289.88	336.87	46.99	0.43	0.31	0.022	0.06	1.7
				Incl.	406.12	551.00	<b>144.88</b>	0.31	0.22	0.018	0.03	1.1
				and	412.00	488.00	76.00	0.38	0.28	0.018	0.04	1.4
				and	412.00	434.00	22.00	0.42	0.31	0.022	0.04	1.5
				and	459.54	488.00	28.46	0.41	0.30	0.018	0.05	1.5
DK22010	0	-90	566		8.63	566.00	<b>557.37</b>	0.36	0.25	0.018	0.06	1.4
				Incl.	8.63	317.56	<b>308.93</b>	0.42	0.31	0.017	0.08	1.8
				and	101.00	317.56	<b>216.56</b>	0.45	0.33	0.018	0.08	1.5
				and	185.00	206.00	21.00	0.48	0.38	0.012	0.08	1.6
				and	243.45	300.75	57.30	0.68	0.50	0.027	0.13	2.0
Incl.	338.00	368.00	30.00	0.49	0.33	0.030	0.08	1.3				
DK23013	0	-90	576		255.00	261.00	6.00	0.30	0.24	0.008	0.04	0.9
					273.00	294.00	21.00	0.23	0.18	0.006	0.03	0.9
					517.85	528.00	10.15	0.22	0.17	0.006	0.04	0.9
DK23015	0	-50	546		7.70	75.00	67.30	0.35	0.25	0.012	0.07	1.5
				Incl.	21.00	51.00	30.00	0.43	0.31	0.014	0.09	1.6
					231.00	261.00	30.00	0.21	0.16	0.004	0.06	0.8
					339.00	372.00	33.00	0.44	0.20	0.053	0.06	1.3
DK23017	248	-50	262.83		25.92	128.00	<b>102.08</b>	0.17	0.14	0.005	0.02	0.6

**AMARC RESOURCES LTD.**

**MANAGEMENT'S DISCUSSION AND ANALYSIS**

**FOR THE THREE MONTHS ENDED JUNE 30, 2023**

Drill Hole <sup>5</sup>	Azim (°)	Dip (°)	EOH (m)	Incl.	From (m)	To (m)	Int. <sup>1,2,3</sup> (m)	CuEQ <sup>4</sup> (%)	Cu (%)	Mo (%)	Au (g/t)	Ag (g/t)
				Incl.	25.92	55.70	29.78	0.23	0.18	0.006	0.04	0.7
				and	34.00	49.00	15.00	0.28	0.21	0.008	0.07	0.7
DK23018	0	-90	519		4.89	117.00	<b>112.11</b>	0.16	0.13	0.004	0.03	0.6
				Incl.	9.00	45.00	36.00	0.23	0.18	0.009	0.04	0.8
DK23019	0	-90	570		15.85	77.00	61.15	0.28	0.23	0.008	0.02	1.1
				Incl.	15.85	24.00	8.15	0.49	0.41	0.010	0.04	2.1
				Incl.	45.00	62.00	17.00	0.33	0.28	0.008	0.03	1.2
					207.00	346.00	<b>139.00</b>	0.17	0.13	0.008	0.02	0.7
				Incl.	251.00	267.00	16.00	0.25	0.21	0.004	0.02	1.5
					381.00	570.00	<b>189.00</b>	0.20	0.14	0.013	0.02	0.6
				Incl.	396.00	409.84	13.84	0.26	0.17	0.020	0.03	0.9
				Incl.	453.00	491.00	38.00	0.22	0.15	0.016	0.02	0.8
				Incl.	512.00	570.00	58.00	0.22	0.17	0.011	0.02	0.5
DK23020	0	-90	540		10.07	180.00	<b>169.93</b>	0.26	0.20	0.009	0.04	0.9
				Incl.	13.16	45.00	31.84	0.29	0.22	0.009	0.04	1.0
				Incl.	90.00	123.00	33.00	0.27	0.22	0.009	0.03	1.0
				Incl.	135.00	165.00	30.00	0.38	0.30	0.013	0.05	1.0
					258.00	450.00	<b>192.00</b>	0.19	0.13	0.008	0.04	0.7
				Incl.	345.00	366.00	21.00	0.24	0.19	0.006	0.03	0.9
					516.00	528.00	12.00	0.31	0.20	0.013	0.10	0.9
DK23021	88	-45	615		160.00	375.00	<b>215.00</b>	0.21	0.16	0.007	0.03	1.2
				Incl.	261.00	334.15	73.15	0.33	0.26	0.009	0.04	2.4
				and	279.00	309.00	30.00	0.49	0.39	0.012	0.07	1.9
DK23022	0	-90	600.62		27.01	196.50	<b>169.49</b>	0.33	0.25	0.014	0.05	0.9
				Incl.	50.00	165.00	<b>115.00</b>	0.38	0.28	0.017	0.06	1.0
				and	62.00	144.50	82.50	0.41	0.30	0.017	0.06	1.1
					231.50	439.87	<b>208.37</b>	0.20	0.15	0.010	0.02	0.9
				Incl.	233.63	272.00	38.37	0.29	0.23	0.011	0.03	1.0
					515.95	600.62	84.67	0.26	0.19	0.013	0.03	1.2
				Incl.	518.20	544.00	25.80	0.34	0.26	0.012	0.04	1.6
DK23023	88	-45	385.15		15.40	123.09	<b>107.69</b>	0.19	0.15	0.005	0.03	0.8
					21.00	42.00	21.00	0.24	0.19	0.008	0.04	0.7
					102.00	117.00	15.00	0.33	0.28	0.003	0.05	2.2
DK23024	0	-90	188.18		10.20	56.00	45.80	0.32	0.24	0.012	0.04	1.1
				Incl.	10.20	21.00	10.80	0.41	0.32	0.013	0.06	1.3
					117.64	153.40	35.76	0.47	0.34	0.024	0.06	1.5
DK23025	0	-90	147	No significant intercepts								
DK23026	0	-90	600		12.15	55.80	43.65	0.31	0.24	0.010	0.04	1.1
					12.15	27.00	14.85	0.38	0.30	0.012	0.05	1.3
					120.34	153.16	32.82	0.40	0.30	0.017	0.05	1.5
					268.24	600.00	<b>331.76</b>	0.25	0.18	0.014	0.02	0.8
				Incl.	268.24	288.27	20.03	0.41	0.30	0.022	0.04	1.3
				Incl.	405.00	522.40	<b>117.40</b>	0.28	0.20	0.014	0.03	0.8
				and	429.00	444.44	15.44	0.39	0.28	0.021	0.04	1.0

**AMARC RESOURCES LTD.**

**MANAGEMENT'S DISCUSSION AND ANALYSIS**

**FOR THE THREE MONTHS ENDED JUNE 30, 2023**

Drill Hole <sup>5</sup>	Azim (°)	Dip (°)	EOH (m)	Incl.	From (m)	To (m)	Int. <sup>1,2,3</sup> (m)	CuEQ <sup>4</sup> (%)	Cu (%)	Mo (%)	Au (g/t)	Ag (g/t)
				Incl.	543.00	567.00	24.00	0.37	0.30	0.010	0.04	1.2
DK23027	268	-45	324		29.00	71.95	42.95	0.27	0.20	0.012	0.04	1.0
DK23028	88	-75	561		103.65	323.74	<b>220.09</b>	0.23	0.15	0.017	0.03	0.9
				Incl.	216.00	273.00	57.00	0.27	0.19	0.018	0.02	0.8
					381.00	438.61	57.61	0.20	0.12	0.016	0.02	0.7
				Incl.	419.14	431.79	12.65	0.29	0.20	0.017	0.03	1.2
					471.54	561.00	89.46	0.16	0.11	0.011	0.02	0.6

**Initial Test Drills Holes into the Broader 4.7 km<sup>2</sup> Mineralized System**

Drill Hole <sup>5</sup>	Azim. (°)	Dip (°)	EOH (m)	Incl.	From (m)	To (m)	Int. <sup>1,2,3</sup> (m)	CuEQ <sup>4</sup> (%)	Cu (%)	Mo (%)	Au (g/t)	Ag (g/t)
DK23011	90	-60	524	No significant intercepts								
DK23012	90	-50	416		192.00	297.00	<b>105.00</b>	0.26	0.16	0.008	0.10	1.4
				Incl.	243.00	294.00	51.00	0.34	0.26	0.012	0.04	2.2
				and	264.00	294.00	30.00	0.47	0.36	0.015	0.06	3.2
DK23014	270	-61	497		14.62	56.00	41.38	0.18	0.12	0.007	0.06	0.7
				Incl.	17.00	29.00	12.00	0.24	0.14	0.006	0.13	0.9
					158.00	185.00	27.00	0.16	0.11	0.005	0.05	0.8
DK23016	90	-45	500	No significant intercepts								
DK23029	90	-45	350	No significant intercepts								
DK23030	268	-45	462	No significant intercepts								
DK23031	268	-45	386	No significant intercepts								
DK23032	268	-45	399	No significant intercepts								

	>0.30% CuEQ
	0.15 – 0.30% CuEQ

**Notes:**

- Widths reported are drill widths, such that true thicknesses are unknown.
- All assay intervals represent length-weighted averages.
- Some figures may not sum exactly due to rounding.
- Copper equivalent (CuEQ) calculations use metal process prices of: Cu US\$4.00/lb, Au US\$1800/oz., Ag US\$24/oz. and Mo US\$15/lb and conceptual recoveries of: Cu 85%, Mo 82%, Au 72% and 67% Ag. Conversion of metals to an equivalent copper grade based on these metal prices is relative to the copper price per unit mass factored by conceptual recoveries for those metals normalized to the conceptualized copper recovery. The metal equivalencies for each metal are added to the copper grade. The general formula for this is: CuEQ% = Cu% + ((Au g/t \* (Au recovery / Cu recovery) \* (Au \$ per oz./31.1034768 / Cu \$ per lb. \* 22.04623)) + ((Ag g/t \* (Ag recovery / Cu recovery) \* (Ag \$ per oz./ 31.1034768 / Cu \$ per lb. \* 22.04623)) + ((Mo% \* (Mo recovery / Cu recovery) \* (Mo \$ per lb.) / Cu \$ per lb.)).
- The collar locations in UTM NAD83, Zone 9N coordinates for drill holes are provided in Amarc release June 15, 2023.

**New Duke District Porphyry Cu-Au Targets**

Appreciating the Cu-Au prospectivity of the Babine District and its relatively unexplored nature due to the widespread glacial cover (4 m to 18 m thick in the Amarc DUKE discovery drill holes), Amarc completed a comprehensive compilation of government and historical data over the entire DUKE District. This integrated study provided a new interpretation of the geological, geochemical and geophysical characteristics of the Babine District, identifying 16 previously unrecognized high potential porphyry Cu-



## AMARC RESOURCES LTD.

### MANAGEMENT'S DISCUSSION AND ANALYSIS

#### FOR THE THREE MONTHS ENDED JUNE 30, 2023

---

Au deposit targets. These target areas were defined, for example, by anomalous Cu-Au-Mo-Ag (and other porphyry indicator elements) till geochemistry, till samples with identified grains of bornite, chalcopyrite and/or favorable biotite feldspar porphyry, compelling up-ice magnetic geophysics features, and indications of structural control along faults emanating from large deep-seated regional structures that likely controlled the emplacement of the prospective intrusions, along with numerous other scientific vectors.

In May 2023, Amarc remobilized its exploration team to complete extensive airborne and ground exploration surveys to assess the 16 prioritized porphyry Cu-Au targets across the DUKE District to define targets for winter 2023-2024 drill testing. Exploration activities commenced with an extensive 5,759 line-km, helicopter-supported high-resolution aeromagnetic survey covering an area in excess of 500 km<sup>2</sup> over the DUKE District, which builds on previous Amarc and historical aeromagnetic coverage. The very informative results of this survey are being integrated with the comprehensive District-wide surface exploration program that is underway to define multiple porphyry Cu-Au deposit drill targets.

#### **DUKE District Agreement with Boliden**

On November 22, 2022, Amarc announced it had entered into an agreement (the "Agreement") with Boliden Mineral Canada Ltd. ("Boliden"), a wholly-owned subsidiary of the Boliden Group.

Under the terms of the Agreement Boliden has a two-staged option to earn up to a 70% interest in the DUKE District.

To earn an initial 60% interest Boliden must fund CDN\$30 million of exploration and development expenditures within four years of the effective date of the Agreement, of which CDN\$5 million is a committed amount to be spent in 2022 and early 2023. Amarc will be the operator during this initial earn-in stage.

Upon earning a 60% interest, Boliden can elect to earn an additional 10% interest in the Duke District, for an aggregate 70% interest, by funding an additional CDN\$60 million of exploration and development expenditures at a minimum rate of CDN\$10 million per year over the ensuing six years. Once Boliden has earned a 60% interest it will also have the right to become the operator.

Upon Boliden finalizing its earned ownership interest, Amarc and Boliden will form either a 60:40 or 70:30 unincorporated joint venture to further advance the Duke District. At that stage each party will be responsible for funding its own pro-rata share of project costs, or be subject to customary equity dilution.

Boliden is investing a minimum of \$10 million through to December 31, 2023.

#### **DUKE District Royalties**

Amarc holds 100% interest in the DUKE District free of any underlying royalty.

#### **The IKE Cu-Au District**

Amarc's 100% owned **IKE District** is located 35 km northwest of the town of Gold Bridge in southwestern BC near the heartland of the provinces producing porphyry Cu mines. It is proximal to industrial

MANAGEMENT'S DISCUSSION AND ANALYSIS

FOR THE THREE MONTHS ENDED JUNE 30, 2023

---

infrastructure including power, and also highways and rail that connect the District to Vancouver and its port facilities.

Hydrothermal alteration and mineralization, which is prospective for the discovery of porphyry Cu±Au±Mo±Ag and related deposit types occurs throughout the 462 km<sup>2</sup> IKE District. The District occupies a highly fertile block of crust where magmatic-hydrothermal-structural characteristics are favorable for the formation of intrusion-related Cu±Au±Mo±Ag deposits with good grade (see below). These characteristics are common to most porphyry districts around the world that host major, and commonly multiple, Cu±Au±Mo±Ag deposits.

The greater IKE District includes the IKE porphyry Cu-Mo-Ag deposit discovery, the high potential Greater Empress area that hosts the Empress Cu-Au-Ag deposit and significant porphyry Cu-Au-Mo-Ag and Cu-Au-Ag replacement deposit targets, and also a number of promising porphyry Cu and Au-Ag epithermal targets. The District has the potential to develop into an important mining camp.

The IKE technical information in this section is summarized from the Company's National Instrument 43-101 Technical Report ("IKE Technical Report") filed under Amarc's profile at [www.sedar.com](http://www.sedar.com) and on the Company's website at [www.amarcresources.com/projects/ike-project/technical-report](http://www.amarcresources.com/projects/ike-project/technical-report).

### **IKE Porphyry Cu-Mo-Ag Deposit**

The potential of the **IKE Deposit** was recognized by Amarc during a review of porphyry occurrences located in underexplored mineral belts in BC. Limited historical drilling indicated the presence of a mineral system with characteristics favorable for an economically viable porphyry Cu-Mo-Ag deposit, underlying a significant area of gossanous material. Three historical drill holes, located over approximately 220 m, had intersected long continuous intercepts of chalcopyrite and molybdenite mineralization with encouraging grades, for example: Hole 11-1 returned 186 m of 0.41% CuEQ<sup>4</sup> (see Table 3 for note 4) at 0.31% Cu, 0.022% Mo, 1.9 g/t Ag and 0.01 g/t Au, including 58 m of 0.52% CuEQ at 0.39% Cu, 0.031% Mo, 1.9 g/t Ag and 0.02 g/t Au; and Hole 11-2: 120 m of 0.41% CuEQ at 0.31% Cu, 0.020% Mo, 3.3 g/t Ag and 0.01 g/t Au including 32 m of 0.58% CuEQ at 0.42 % Cu, 0.028% Mo, 6.3 g/t Ag and 0.02 g/t Au.

There was no follow up exploration until Amarc initiated exploration. Largely co-incident magnetic, IP chargeability geophysics and geochemical talus fines anomalies, together with geological alteration mapping have defined an extensive 9 km<sup>2</sup> hydrothermal system, into which Amarc has completed approximately 15,455 m of core drilling in 26 widely spaced holes. This drilling has confirmed the presence of a substantial body of porphyry Cu-Mo-Ag mineralization with encouraging grades, over an area 1,200 m east-west by 1,000 m north- south, and over a vertical extent of 875 m depth, that remains open to expansion. Table 3 provides selected drill intercepts for the IKE Deposit.

**AMARC RESOURCES LTD.**

**MANAGEMENT'S DISCUSSION AND ANALYSIS  
FOR THE THREE MONTHS ENDED JUNE 30, 2023**

**Table 3: IKE DEPOSIT  
Selected Drill Intervals from Amarc's Drilling**

Drill Hole	From (m)	To (m)	Int. (m) <sup>1,2,3</sup>	Cu (%)	Au (g/t)	Ag (g/t)	Mo (%)	CuEQ(%) <sup>4,5</sup>	
<b>IK14005</b>	269.4	325.4	56.0	0.31	-	1.6	0.064	0.55	
	339.1	426.2	87.1	0.36	-	0.7	0.054	0.56	
	Incl.	347.7	378.6	30.9	0.47	-	0.052	0.67	
	437.6	554.6	117.0	0.27	-	0.3	0.021	0.35	
	602.9	616.1	13.2	0.29	-	0.6	0.009	0.32	
<b>IK15010</b>	204.0	268.0	64.0	0.30	-	2.9	0.015	0.38	
	293.0	421.0	128.0	0.33	-	3.1	0.022	0.43	
	Incl.	298.5	330.0	31.5	0.43	-	0.032	0.58	
	444.0	506.0	62.0	0.24	-	2.3	0.020	0.32	
<b>IK15013</b>	48.0	60.0	12.0	0.23	-	1.7	0.017	0.31	
	75.0	99.0	24.0	0.24	-	1.9	0.044	0.41	
	129.0	307.7	178.7	0.32	-	2.2	0.025	0.42	
	339.5	366.5	27.0	0.18	-	1.2	0.030	0.30	
	372.5	693.3	320.8	0.32	-	2.3	0.038	0.47	
	Incl.	527.4	651.5	124.1	0.43	-	3.3	0.063	0.68
<b>IK16020</b>	111.0	156.0	45.0	0.25	-	1.7	0.015	0.31	
	314.5	381.9	67.4	0.35	-	2.8	0.023	0.45	
	Incl.	366.0	381.9	15.9	0.45	-	0.044	0.64	
	395.8	456.0	60.2	0.53	-	3.7	0.045	0.72	
	528.0	543.0	15.0	0.16	-	1.3	0.035	0.30	
	549.0	582.0	33.0	0.23	-	1.6	0.110	0.64	
<b>IK18025</b>	257.0	351.7	94.7	0.37	0.020	2.5	0.020	0.47	
	Incl.	308.0	345.4	37.4	0.48	0.025	3.4	0.030	0.62
	359.0	437.0	78.0	0.44	0.019	3.0	0.037	0.61	
	461.0	482.0	21.0	0.14	0.005	1.0	0.054	0.35	

CuEQ%	>=0.30 & <0.50
	>=0.50

**Notes:**

- Widths reported are drill widths, such that the thicknesses are unknown.
- All assay intervals represent length-weighted averages.
- Some figures may not sum exactly due to rounding.
- Copper equivalent (CuEQ) calculations use metal prices of: Cu US\$3.00/lb, Mo US\$12.00/lb, Ag US\$18.00/oz and Au US\$1,400.00/oz and conceptual recoveries of: Cu 90%, Au 72%, 67% Ag and 82% Mo. Conversion of metals to an equivalent Cu grade based on these metal prices is relative to the Cu price per unit mass factored by predicted recoveries for those metals normalized to the copper recovery. The metal equivalencies for each metal are added to the Cu grade. The general formula for this is:  $CuEQ\% = Cu\% + (Au\ g/t * (Au\ recovery / Cu\ recovery) * (Au\ \$\ per\ oz / 31.1034768) / (Cu\ \$\ per\ lb * 22.04623)) + (Ag\ g/t * (Ag\ recovery / Cu\ recovery) * (Ag\ \$\ per\ oz / 31.1034768) / (Cu\ \$\ per\ lb * 22.04623)) + (Mo\ \% * (Mo\ recovery / Cu\ recovery) * (Mo\ \$\ per\ lb / Cu\ \$\ per\ lb))$ .
- The estimated metallurgical recoveries are conceptual in nature. There is no guarantee that the metallurgical testing required to determine metal recoveries will be done or, if done, the metallurgical recoveries could be at the level of the conceptual recoveries used to determine the CuEQ.
- Details of analysis, QA/QC and data verification for the DUKE Deposit drilling are provided in the 2020 DUKE National Instrument 43-101 Technical Report, which is posted on the Amarc website and the Company's profile on SEDAR.
- Results of these historical Ducanex JV drill holes are from the 1991 Corona resampling and analyses by Acme.

MANAGEMENT'S DISCUSSION AND ANALYSIS  
FOR THE THREE MONTHS ENDED JUNE 30, 2023

---

(-) Means not assayed for.

† Details of analysis, QA/QC and data verification for the IKE Deposit drilling is provided in the 2020 IKE National Instrument 43-101 Technical Report, which is posted on the Amarc website and the Company's profile on SEDAR at [www.sedar.com](http://www.sedar.com).

Like many major porphyry deposits, the IKE Deposit formed in a very active, multi-stage hydrothermal system that was extensive and robust. Geological mapping and logging of diamond drill core at IKE indicate the deposit is hosted entirely by multi-phase intrusive rocks. Its overall geological setting is similar to that of many important porphyry belts along the Cordillera in North and South America.

Core observations and initial petrographic studies at IKE indicate that the chalcopyrite and molybdenite mineralization occurs as fine to relatively coarse, mostly discrete grains, mainly as disseminations and less commonly in fractures and veins. Multi-element analyses have returned consistently and unusually low concentrations of metallurgically or environmentally deleterious elements. These characteristics, and the generally low concentrations of pyrite at IKE, suggest excellent potential to produce clean, good-grade Cu and Mo concentrates by standard flotation processing.

Subject to funding, the Company is planning an expanded phased drill program at the IKE deposit with the goal of establishing a mineral resource, which will provide the basis for initial future economic studies.

The Company has the required permit in-hand for the proposed drill programs.

### **Empress Deposit and Greater Empress Area Au-Rich Porphyry Cu and Replacement-Style Deposit Potential**

Having recognized the potential of the IKE Deposit, Amarc consolidated the IKE District tenure. This included an important 35 km<sup>2</sup> sub-area of the District located 6 km north of the IKE Deposit, that straddles the Coastal Plutonic Complex ("CPC") contact for approximately 15 km. This area known as the **Greater Empress area** is centred on the higher grade **Empress Cu-Au-Ag Deposit**. The Greater Empress area has seen exploration completed by several operators since the 1920's. Recent compilation and integration of useful historical information from geochemical and geophysical surveys and also drilling, permitted a rapid advancement in the understanding of the potential both to expand the Empress Deposit, and throughout the area with the recognition of significant porphyry Cu±Au±Mo-Ag and Cu-Au-Ag replacement deposit targets. Potential also exists for auriferous, polymetallic/mesothermal-epithermal deposits. The Company has the required permits in-hand for the proposed drill programs and IP geophysical surveys.

#### ***Empress Cu-Au-Ag Replacement Deposit***

Historical drilling at **Empress** has indicated a significant body of good grade Cu-Au mineralization, which remains open to expansion with a modern core drilling program. Table 4 provides selected drill historical intercepts for the Empress Deposit. Mineralization at Empress is considered to have formed by the replacement of previously altered volcanics by a quartz-magnetite-sulphide assemblage, with higher Cu-Au-Ag grades commonly occurring within 100 m in vertical distance above the CPC's contact, within the overlying volcanics. An initial examination of historical drill core by the Amarc team recognized the nearby, Granite porphyry Cu-Au-Ag-Mo deposit target, which is shallowly concealed by overburden. The Granite porphyry deposit target is considered a probable source of the Empress Deposit replacement fluids. Historical core drill intercepts at Granite include Hole 91-49 which returned 92 m of 0.38% CuEQ<sup>4</sup> (see Table 3 for note 4) @ 0.22% Cu, 0.23 g/t Au, 0.008% Mo and 0.4 g/t Ag. This target has not been delineated and mineralization remains open to expansion. Step-out drilling from the known

**AMARC RESOURCES LTD.**

**MANAGEMENT'S DISCUSSION AND ANALYSIS**

**FOR THE THREE MONTHS ENDED JUNE 30, 2023**

mineralization is required.

**Table 4: EMPRESS DEPOSIT  
Selected Drill Intervals from Historical Drilling**

Drill Hole	From (m)	To (m)	Int. (m) <sup>1,2,3</sup>	Cu (%)	Au (g/t)	Ag (g/t)	Mo (%)	CuEQ (%) <sup>4,5</sup>
76-2	51.2	114.9	63.7	0.37	0.492	0.1	-	0.64
Incl.	60.4	72.4	12.0	0.51	0.442	-	-	0.76
Incl.	103.0	114.9	11.9	0.75	0.721	0.4	-	1.15
	139.6	185.3	45.7	0.42	0.350	0.6	-	0.61
Incl.	139.6	157.9	18.3	0.39	0.941	1.1	-	0.91
Incl.	173.1	185.3	12.2	0.73	0.010	-	-	0.74
	209.4	215.8	6.4	0.74	0.758	-	-	1.15
76-3	5.2	17.7	12.5	0.23	0.162	1.6	-	0.33
	26.8	102.9	76.1	0.92	1.418	4.7	-	1.72
Incl.	26.8	37.6	10.8	0.49	4.244	2.3	-	2.81
Incl.	42.7	74.4	31.7	1.11	1.388	4.5	-	1.89
88-2	7.3	50.3	43.0	0.36	0.326	1.3	0.005	0.57
Incl.	13.4	29.9	16.5	0.62	0.579	2.3	0.002	0.95
88-7	17.7	69.5	51.8	0.47	0.457	2.4	0.002	0.74
Incl.	48.4	64.6	16.2	0.98	0.741	5.7	0.001	1.43
89-2	21.6	123.7	102.1	0.36	0.361	2.7	0.001	0.58
Incl.	26.5	37.0	10.5	0.31	0.754	3.2	0.003	0.75
Incl.	60.6	78.9	18.3	0.72	0.573	3.8	0.001	1.06
Incl.	99.1	118.0	18.9	0.49	0.470	4.2	0.001	0.78
89-8	9.1	115.5	106.4	0.35	0.359	1.5	0.003	0.56
Incl.	78.0	99.6	21.6	0.69	0.913	2.8	0.003	1.21
90-17	107.6	113.4	5.8	0.55	0.446	1.6	0.010	0.84
	143.9	200.3	56.4	1.38	1.666	4.1	0.009	2.35
90-18	22.6	29.3	6.7	0.15	0.300	0.7	0.008	0.35
	35.0	40.5	5.5	0.15	0.523	0.3	0.006	0.46
	47.9	74.4	26.5	0.47	0.683	3.2	0.010	0.90
	79.9	92.7	12.8	0.15	0.254	0.4	0.003	0.31
	107.0	161.9	54.9	0.78	0.746	1.0	0.004	1.20
90-21	10.4	19.5	9.1	0.31	0.336	0.5	0.011	0.53
	140.5	192.9	52.4	1.10	1.209	2.5	0.004	1.79
Incl.	153.3	175.3	22.0	1.58	1.671	2.6	0.006	2.52
Incl.	182.6	191.1	8.5	1.92	2.735	7.8	0.006	3.48
	198.4	218.8	20.4	0.30	0.542	1.3	0.002	0.61
90-22	143.9	190.2	46.3	1.15	1.415	4.2	0.009	1.98
90-29	94.2	110.6	16.4	0.43	0.171	1.3	0.003	0.55
	141.7	214.6	72.9	0.37	0.433	0.6	0.003	0.62
Incl.	178.3	194.8	16.5	0.86	1.069	1.5	0.003	1.46

CuEQ%	>=0.30 & <0.50
	>=0.50

For notes refer to Table 3.

MANAGEMENT'S DISCUSSION AND ANALYSIS  
FOR THE THREE MONTHS ENDED JUNE 30, 2023

**Greater Empress Area Cu±Au±Mo±Ag Porphyry and Replacement Targets:** In addition to the Empress deposit, the 35 km<sup>2</sup> **Greater Empress area** includes seven identified compelling porphyry and replacement-style Cu-Au±Mo±Ag deposit and exploration targets. The deposit targets include, **Empress East, Empress Gap, Granite** (as discussed above) and **Buzzer**, and the earlier-stage exploration targets include **Empress West**. Each are discussed below with selected historical drill results provided in Tables 5 and 6. These targets are either: not fully drill delineated or have been tested only by shallow, widely-spaced historical reconnaissance percussion drilling; and can with focused exploration be brought to a drill ready status.

**Empress East Cu-Au-Ag Replacement Deposit Target:** Located 1 km east of the Empress Deposit, limited historical core holes drilled at the **Empress East** deposit target intercepted mineralization similar to that at the Empress deposit in both style and grade. This drilling together with moderate to locally strong IP chargeability responses, magnetic geophysical features, and results from historical Cu and Au soil geochemistry where (>250 ppm Cu and ≥50 ppb Au values closely reflect the first three historical drill samples results at the base of overburden, see IKE Technical Report), indicate there is significant potential with further core drilling to enlarge this body of mineralization. Notably there is a complete absence of drill holes in the southern part of this target, which is at a position that is analogous to shallower, higher grade Cu-Au-Ag replacement-style mineralization at the Empress deposit to the west.

**Table 5: EMPRESS EAST DEPOSIT TARGET  
Selected Drill Intervals from Historical Drill**

Drill Hole	From (m)	To (m)	Int. (m) <sup>1,2,3</sup>	Cu(%)	Au (g/t)	Ag (g/t)	Mo (%)	CuEQ (%) <sup>4,5</sup>
91-39	9.8	37.8	28.0	0.34	0.543	1.2	0.002	0.66
	107.6	147.5	39.9	0.40	0.332	0.8	0.004	0.60
	Incl. 141.4	147.5	6.1	1.23	0.928	2.2	0.009	1.78
91-54	73.1	85.0	11.9	0.31	0.221	0.7	0.001	0.44
	108.2	158.2	50.0	0.46	0.304	1.0	0.002	0.64

CuEQ%		≥0.30 & <0.50
		≥0.50

For notes refer to Table 3.

**Empress Gap Cu-Au-Ag Replacement Deposit Target:** Results from limited historical drilling, comprising 11 shallow percussion drill holes and three deeper core holes in the >1 km long **Empress Gap** zone located between the Empress Deposit and Empress East, suggest a clear opportunity to discover additional Cu-Au-Ag mineralization in proximity to the volcanic-CPC contact. Many of the short percussion holes returned anomalous Cu-Mo (Au and Ag were not analyzed for), potentially indicative of higher-grade underlying mineralization as at the Empress Deposit. Of the deeper core holes, Cu-Au mineralization associated with alteration similar to that at Empress is also reported, however only two of these holes reached the volcanic-CPC contact.

Empress Gap is a significantly underexplored target and drill testing of areas close to the CPC-volcanic contact is required.

MANAGEMENT'S DISCUSSION AND ANALYSIS  
FOR THE THREE MONTHS ENDED JUNE 30, 2023

**Buzzer Cu-Au-Ag±Mo Porphyry Deposit Target:** The **Buzzer** deposit target is located in the eastern side of the Greater Empress area inboard of the CPC. Historical drilling at Buzzer has intercepted high grade Cu-Au-Ag-Mo porphyry mineralization hosted in biotite altered intrusions (Table 6). Whether these mineralized intrusions, are part of a small high-level cupola or a large mineralized intrusive mineralized body below, as indicated by magnetic surveys, cannot be determined from the limited drilling.

The Granite and Buzzer porphyry systems demonstrate that significant porphyry-style mineralization is present in the Greater Empress area, and that further exploration surveys and drilling have the potential to make new porphyry discoveries, both inboard and outboard from the CPC contact.

**Table 6: BUZZER DEPOSIT TARGET  
Selected Drill Intervals from Historical Drilling**

Drill Hole	From (m)	To (m)	Int. (m) <sup>1,2,3</sup>	Cu (%)	Au (g/t) <sup>4</sup>	Ag (g/t)	Mo (%)	CuEQ (%) <sup>4,5</sup>
<b>DDH-3†</b>	21.3	120.4	99.1	0.43	-	-	0.042	0.58
<b>DDH-4†</b>	14.6	113.4	98.8	0.37	-	-	0.037	0.50
<b>X-1</b>	0.0	5.9	5.9	0.15	0.237	5.8	0.013	0.36
	9.5	42.5	33.0	0.26	0.175	3.4	0.042	0.53
	Incl. 24.7	40.8	16.1	0.40	0.268	5.0	0.064	0.81
<b>X-3</b>	0.0	44.2	44.2	0.67	0.496	5.3	0.046	1.14
	Incl. 10.7	38.1	27.4	0.86	0.724	6.6	0.059	1.51
<b>GC11-74</b>	11.4	52.2	40.8	0.28	0.210	1.8	0.012	0.44
	Incl. 15.0	27.0	12.0	0.41	0.281	2.6	0.021	0.66

CuEQ%		>=0.30 & <0.50
		>=0.50

For notes refer to Table 3.

† Assay interval from historically reported composite. Individual assay results are unknown.

**Empress West Cu-Au-Ag Exploration Target:** This large target, which extends more than 2 km to the west of the Empress deposit along the favorable CPC-volcanic contact, has only been tested by widely-spaced and shallow percussion holes and a few core. It exhibits the same geological setting as the Empress Deposit, and the potential to discover additional Cu-Au-Ag mineralization is indicated by the results of the historical drilling when combined with magnetic and IP survey data, and known Cu-Au-Mo anomalies in soils. Modern IP and drilling are required to test a series of defined targets.

**IKE District Porphyry and Epithermal Targets:** The IKE District hosts several known centres of porphyry Cu mineralization (**Rowbottom, Mad Major, OMG**) and Au-Ag epithermal mineralization (**Battlement, Mewtwo**) that exist outside of, but in proximity to and between, the IKE Deposit and Greater Empress areas. Limited exploration by historical operators and/or Amarc indicates that further survey work followed by drilling is warranted at these targets.

**Rowbottom Cu-Mo-Au Porphyry Deposit Target:** At **Rowbottom**, porphyry-style mineralization and alteration is intermittently exposed along 550 m of Rowbottom creek, and spatially associated with an extensive 1.3 km by 1.0 km IP chargeability anomaly that remains open for further surveying. Limited

## AMARC RESOURCES LTD.

### MANAGEMENT'S DISCUSSION AND ANALYSIS

#### FOR THE THREE MONTHS ENDED JUNE 30, 2023

---

historical shallow percussion drilling returned good Cu and Mo grades (Au and Ag were not analysed for), and a single core hole completed by Amarc confirmed the presence of Au and Ag.

Historical drill intercepts include for example: Hole S-64: 49 m of 0.51% CuEQ<sup>4</sup> (see Table 3 for note 4) 0.49% Cu and 0.007% Mo and Hole S-24: 43 m of 0.40% CuEQ at 0.28% Cu and 0.032% Mo.

The Amarc core hole intersected significant intervals of porphyry Cu-Mo mineralization hosting elevated Ag and Au values, which are cut by a number of post mineral dykes and returned, for example: RB17001: 66 m of 0.38% CuEQ<sup>4</sup> at 0.29% Cu, 0.006% Mo, 0.08 g/t Au and 4.1 g/t Ag and 21 m of 0.43% CuEQ at 0.38% Cu, 0.007% Mo and 4.3 g/t Ag.

An historical soils grid along with both the historical and Amarc IP chargeability anomalies suggest that a larger system could be present, warranting further drilling both laterally and to depth in order to determine the geometry and grade distribution of the Rowbottom deposit target.

**Mad Major Cu-Mo Porphyry Target:** The **Mad Major-OMG** target area extends over approximately 23 km<sup>2</sup> area of highly anomalous stream sediment geochemistry and gossanous ridges (see IKE Technical Report). Amarc's exploration, and that of historical operators, has defined several large IP chargeability and magnetic geophysical, talus fines and soils geochemical and geological alteration mapping anomalies that remain to be adequately drill tested. Amarc has completed only eight very wide-spaced core holes into the target, and the source of the IP and geochemical anomalies is yet to be determined. Additional survey work and drilling are warranted.

**Battlement and Mewtwo Au-Ag Epithermal Targets:** Although not the focus of Amarc's exploration, epithermal potential exists on the IKE District. For example, at both **Battlement** and **Mewtwo** reconnaissance stage exploration suggests a geological environment that is permissive for either, or both, a porphyry or epithermal-type deposits. Further exploration is warranted at both targets.

The Company has the permits in-hand for the potential work programs.

In summary collectively the IKE Deposit, Empress Deposit, Greater Empress area and IKE District target areas as described warrant substantial exploration programs.

#### **IKE District Capped Royalties**

Amarc has a 100% interest in the IKE, Granite, Juno and Galore Properties, which make up the IKE District. The mineral claims comprising the Juno Property were staked and are owned 100% by the Company.

In July 2014, Amarc acquired a 100% interest in the IKE Property from Oxford Resources Inc. ("Oxford", formerly Highpoint Exploration Inc.). At that time Oxford's ownership interest was converted to a 1% Net Smelter Returns ("NSR") royalty, which can be purchased at any time for \$2 million (payable in cash or common shares of Amarc at the company's sole election).

The IKE Property is also subject to a 2% underlying NSR royalty to two underlying owners, whereby Amarc has the right to purchase: (1) one half of the royalty (1%) for \$2 million (\$1 million of which is payable in cash, Amarc common shares, or any such combination of cash and shares, at Amarc's discretion) at any time prior to commercial production; and (2) the second half of the royalty (1%) also for \$2 million (\$1 million of which is payable in cash, and the balance in Amarc common shares, or any such combination of cash and shares, at Amarc's discretion) at any time on or before a commercial mine



**MANAGEMENT'S DISCUSSION AND ANALYSIS**  
**FOR THE THREE MONTHS ENDED JUNE 30, 2023**

---

production decision has been made in respect of the IKE Property. Amarc has agreed that upon completion of a positive feasibility study it will issue 500,000 common shares to the underlying owners.

In November 2014, Amarc acquired a 100% interest in the adjoining Granite Property from Great Quest Fertilizers Ltd. ("Great Quest", previously known as Great Quest Metals Ltd., which is also referred to as "Great Quest" herein). Great Quest holds a 2% NSR royalty on that property which can be purchased for \$2 million, on or before commercial production (payable in cash, Amarc common shares, or any such combination of cash and shares, at Amarc's discretion). In addition, there is an underlying 2.5% NSR royalty on certain mineral claims within the Granite property, which can be purchased at any time for \$1.5 million less any amount of royalty already paid.

In January 2017, Amarc acquired a 100% interest in the adjoining Galore Property from Galore Resources Inc. ("Galore Resources"), clear of any royalties to Galore Resources. In January 2018, Amarc concluded an agreement with the underlying owners of the Galore Property, whereby Amarc acquired all of the underlying owners' residual interest in and to the Galore Property, including five NSR and five NPI royalties.

On September 3, 2015, Amarc entered into an agreement (the "Agreement") with Thompson Creek (now a wholly owned subsidiary of Centerra) pursuant to which Thompson Creek could acquire, through a staged investment process within five years, a 30% ownership interest in mineral claims and crown grants covering the IKE District. Under the terms of the Agreement, Thompson Creek also received an option, after acquiring its 30% interest, to acquire an additional 20% interest in the IKE District, subject to certain conditions, including the completion of a Feasibility Study. On January 11, 2017, Amarc announced that Thompson Creek, having been acquired by Au-focused Centerra, relinquished its option to earn up to a 50% interest in the IKE District. Thompson Creek had a 10% participating interest in the IKE District by investing \$6 million in exploration programs undertaken in 2015 and 2016, and elected to exchange its participating interest for a 1% Conversion NSR royalty from mine production, which is capped at a total of \$5 million. As a result, Amarc re-acquired 100% interest in the IKE District.

### **The Newton Au Property**

Amarc reported the sale of the Newton Au Property located in south-central BC in December 2020 to a wholly-owned subsidiary of Carlyle Commodities Corp. ("Carlyle"). Under the terms of the agreement, Amarc has received consideration comprising total cash of \$300,000 and 5.5 million equity units (share plus warrant) in Carlyle valued at \$0.25 per unit. In addition, Amarc retains a 2% NSR Royalty in the Property.

Newton was the subject of a National Instrument 43-101 Technical Report (Newton Technical Report) in 2012 which can be found on the Company's website at [www.amarcresources.com/projects/newton-gold-property/overview](http://www.amarcresources.com/projects/newton-gold-property/overview).

The divestment of the Newton Property allows Amarc to retain exposure to the upside Au potential at Newton through its equity position in Carlyle and the retained NSR Royalty, whilst maintaining strategic focus on the development of its three high-value and expansive, 100%-owned Cu±Au districts – JOY, IKE and DUKE.

### **Corporate Update**

On July 8, 2022, the Company announced that it had engaged Kin Communications Inc. to assist with its

**AMARC RESOURCES LTD.**

**MANAGEMENT'S DISCUSSION AND ANALYSIS  
FOR THE THREE MONTHS ENDED JUNE 30, 2023**

investor relations activities.

**Market Trends**

Average annual prices for Cu, Mo, Au and Ag during last 5 years and year to date in calendar 2023 are shown in the following table:

calendar year	Average metal price (US\$)			
	Copper	Molybdenum	Gold	Silver
2018	2.96/lb	11.94/lb	1,269/oz	15.71/oz
2019	2.72/lb	11.36/lb	1,393/oz	16.21/oz
2020	2.80/lb	8.68/lb	1,769/oz	20.54/oz
2021	4.27/lb	15.94/lb	1,799/oz	25.14/oz
2022	3.99/lb	18.73/lb	1,800/oz	21.74/oz
2023 (to the date of this document)	3.91/lb	26.37/lb	1,932/oz	23.40/oz

**1.3 SELECTED ANNUAL INFORMATION**

The following information is derived from the Company's annual financial statements which have been prepared in accordance with IFRS as issued by the IASB effective for the respective reporting years of the Company and are expressed in Canadian Dollars. The Company's audited financial statements are publicly available on SEDAR at [www.sedar.com](http://www.sedar.com).

	2023	2022	2021
('000's, except loss per share)	(\$)	(\$)	(\$)
Total assets	6,091	991	1,560
Non-current liabilities	700	718	570
Net (income) loss for the year	33	364	(1,361)
Basic and diluted (earnings) loss per share	0.00	0.01	(0.01)

**1.4 SUMMARY OF QUARTERLY RESULTS**

These amounts are expressed in thousands of Canadian Dollars, except per share amounts. Minor differences are due to rounding.

	June 30 2023	Mar 31 2023	Dec 31 2022	Sept 30 2022	June 30 2022	Mar 31 2022	Dec 31 2021	Sept 30 2021
('000's)	(\$)	(\$)	(\$)	(\$)	(\$)	(\$)	(\$)	(\$)
Net (income) loss	406	5,557	(894)	(3,900)	(730)	772	154	(542)
Basic and diluted (earnings) loss per share	0.00	0.03	(0.00)	(0.02)	(0.00)	0.00	0.00	(0.00)

The variations in net results over the fiscal quarters presented above relate to the Company's mineral exploration and evaluation activities, which if undertaken typically ramp-up in the summer during the 3<sup>rd</sup> calendar quarter. See the following section of the MD&A for additional discussions.

**AMARC RESOURCES LTD.**

**MANAGEMENT'S DISCUSSION AND ANALYSIS**

**FOR THE THREE MONTHS ENDED JUNE 30, 2023**

**1.5 RESULTS OF OPERATIONS**

The Company recorded a net loss of \$404,996 during the three months ended June 30, 2023 compared to a net loss of \$729,711 during the year ended March 31, 2022.

The following table summarizes the operating results by major categories between the three months ended June 30, 2023 and 2022:

	Three months ended	
	June 30,	
	2023	2022
	(\$)	(\$)
Exploration and evaluation assets expenditures	2,395,347	1,809,000
Administrative expenditures	181,113	147,000
Cost recoveries	(1,799,566)	(2,538,000)

A breakdown by district and project of the Company's exploration and evaluation expenses for the three months ended June 30, 2023 and 2022 is as follows:

	IKE	JOY	DUKE	OTHER	TOTAL
Three months ended June 30, 2023	(\$)	(\$)	(\$)	(\$)	(\$)
Assays and analysis	1,350	72,392	251,802	35,422	360,966
Environmental	38	6,152	11,280	-	17,470
Equipment rental	-	2,000	35,466	-	37,466
Freight	-	6,008	18,583	-	24,591
Geological, including geophysical	-	222,815	565,248	16,261	804,324
Graphics	234	21	10,727	-	10,982
Helicopter and fuel	-	27,332	403,693	-	431,025
Property acquisition and assessments costs	198	1,040	-	101,690	102,928
Site activities	458	66,528	376,970	565	444,521
Socioeconomic	5,972	8,181	27,543	3,110	44,806
Technical data	-	8,247	6,206	-	14,453
Travel and accommodation	-	8,211	92,048	1,556	101,815
	8,250	428,927	1,799,566	158,604	2,395,347

	IKE	JOY	DUKE	OTHER	TOTAL
Three months ended June 30, 2022	(\$)	(\$)	(\$)	(\$)	(\$)
Assays and analysis	3,650	45,406	1,700	-	50,756
Drilling	-	342,027	-	-	342,027
Geological, including geophysical	7,521	175,980	5,820	9,185	198,506
Helicopter and fuel	-	204,870	-	8,905	213,775
Property acquisition and assessments costs	198	780	660	100,780	102,418
Site activities	135	726,660	788	-	727,583
Socioeconomic	2,311	114,981	11,194	48	128,534
Technical data	1,875	7,500	1,875	-	11,250
Travel and accommodation	928	32,020	-	1,584	34,532
	16,618	1,650,224	22,037	120,502	1,809,381

The Company recorded cost recoveries for the three months ended June 30, 2023 of \$1,799,566. All of the cost recoveries are related to operations at the DUKE District.

## AMARC RESOURCES LTD.

### MANAGEMENT'S DISCUSSION AND ANALYSIS FOR THE THREE MONTHS ENDED JUNE 30, 2023

The Financial Statements provides a breakdown of the Company's general and administration expenses for the period ended June 30, 2023. General and administration expenses for the quarter ended June 30 of \$181,113 decreased over the same period of the prior year. A breakdown of general and administration expenses for the three months ended June 30 of the current year and prior year is as follows:

	Three months ended	
	June 30,	
	2023	2022
	(\$)	(\$)
Legal, accounting and audit	3,944	8,469
Office and administration	72,332	67,608
Rent	12,595	9,900
Shareholder communication	70,906	33,230
Travel and accommodation	16,265	4,442
Trust and regulatory	5,071	22,927
Total	181,113	146,576

#### 1.6 LIQUIDITY

Historically, the Company's sole source of funding has been provided from the issuance of equity securities for cash, primarily through private placements to sophisticated investors and institutions, and from director loans. The Company's access to financing is always uncertain. There can be no assurance of continued access to significant equity funding to finance the Company's ongoing operations.

At June 30, 2023, the Company had a cash balance of \$7,324,173 and accounts payable and accrued liabilities of \$718,822.

Further advancement and development of the Company's mineral property interests in the long run will require additional funding from a combination of the Company's shareholders, existing or potential new partners, and debt financing. As the Company is currently in the exploration stage, it does not have any revenues from operations. Therefore, the Company relies on funding from its partners for its continuing financial liquidity and the Company relies on the equity market and debt financing as sources of funding. The Company continues to focus on preserving its cash resources while maintaining its operational activities.

The Company does not have any material capital lease obligations, purchase obligations or any other long-term obligations other than the office lease disclosed in note 13 of the unaudited financial statements for the three months ended June 30, 2023.

#### 1.7 CAPITAL RESOURCES

The Company has no lines of credit or other sources of financing which have been arranged or utilized. The Company has no "Purchase Obligations" defined as any agreement to purchase goods or services that is enforceable and legally binding on the Company that specifies all significant terms, including: fixed or minimum quantities to be purchased; fixed, minimum or variable price provisions; and the approximate timing of the transaction.

MANAGEMENT'S DISCUSSION AND ANALYSIS  
FOR THE THREE MONTHS ENDED JUNE 30, 2023

---

**1.8 OFF-BALANCE SHEET ARRANGEMENTS**

None.

**1.9 TRANSACTIONS WITH RELATED PARTIES**

The required quantitative disclosure is provided in the Financial Statements, which are publicly available on SEDAR at [www.sedar.com](http://www.sedar.com).

***Hunter Dickinson Inc.***

Hunter Dickinson Inc. ("HDI") and its wholly-owned subsidiary Hunter Dickinson Services Inc. ("HDSI") are private companies established by a group of mining professionals. HDSI provides contract services for a number of mineral exploration and development companies, and also to companies that are outside of the mining and mineral development space. Amarc is one of the publicly-listed companies for which HDSI provides a variety of contract services.

The Company has one director in common with HDSI, namely Robert Dickinson. The Company's President, Chief Executive Officer and Director, and Corporate Secretary are employees of HDSI and work for the Company under an employee secondment arrangement between the Company and HDSI.

Pursuant to an agreement dated July 2, 2010, HDSI provides cost effective technical, geological, corporate communications, regulatory compliance, and administrative and management services to the Company, on a non-exclusive basis as needed and as requested by the Company. As a result of this relationship, the Company has ready access to a range of diverse and specialized expertise on a regular basis, without having to engage or hire full-time employees or experts. The Company benefits from the economies of scale created by HDSI which itself serves several clients.

The Company is not obligated to acquire any minimum amount of services from HDSI. The monetary amount of the services received from HDSI in a given period of time is a function of annually set and agreed charge-out rates for and the time spent by each HDSI employee engaged by the Company.

HDSI also incurs third-party costs on behalf of the Company. Such third party costs include, for example, capital market advisory services, communication services and office supplies. Third-party costs are billed at cost, without markup.

There are no ongoing contractual or other commitments resulting from the Company's transactions with HDSI, other than the payment for services already rendered and billed. The agreement may be terminated upon 60 days' notice by either the Company or HDSI.

The details of transactions with HDSI and the balance due to HDSI as a result of such transactions are provided in the Financial Statements, along with the details of borrowings by the Company from Mr. Dickinson.

MANAGEMENT'S DISCUSSION AND ANALYSIS  
FOR THE THREE MONTHS ENDED JUNE 30, 2023

---

***United Mineral Services Ltd.***

United Mineral Services Ltd. ("UMS") is a privately held company wholly-owned by one of the Company's directors. UMS is engaged in the acquisition and exploration of mineral property interests. UMS does incur third party expenses on behalf of the Company from time to time.

Details of transactions with UMS and the balance due to UMS as a result of such transactions are provided in the Financial Statements.

**1.10 PROPOSED TRANSACTIONS**

Except as discussed in this MD&A, there are no proposed transactions requiring disclosure under this section.

**1.11 CRITICAL ACCOUNTING ESTIMATES**

Not required. The Company is a venture issuer.

**1.12 CHANGES IN ACCOUNTING POLICIES INCLUDING INITIAL ADOPTION**

The required disclosure is provided in the Financial Statements, which are publicly available on SEDAR at [www.sedar.com](http://www.sedar.com).

**1.13 FINANCIAL INSTRUMENTS AND OTHER INSTRUMENTS**

The carrying amounts of cash, amounts receivable, marketable securities, accounts payable and accrued liabilities, balance due to a related party, and director's loan approximate their fair values due to their short-term nature.

**1.14 OTHER MD&A REQUIREMENTS**

Additional information relating to the Company is available on SEDAR at [www.sedar.com](http://www.sedar.com).

**1.14.1 ADDITIONAL DISCLOSURE FOR VENTURE ISSUERS WITHOUT SIGNIFICANT REVENUE**

- |     |   |  |
|-----|---|--|
| (a) | capitalized or expensed exploration and development costs | See <a href="#">1.5 Results of Operations</a> above. |
| (b) | expensed research and development costs                   | Not applicable.                                      |
| (c) | deferred development costs                                | Not applicable.                                      |
| (d) | general and administration expenses                       | See <a href="#">1.5 Results of Operations</a> above. |

**AMARC RESOURCES LTD.**

**MANAGEMENT'S DISCUSSION AND ANALYSIS**

**FOR THE THREE MONTHS ENDED JUNE 30, 2023**

---

- (e) any material costs, whether capitalized, deferred or expensed, not referred to in (a) through (d) None.

**1.14.2 DISCLOSURE OF OUTSTANDING SHARE DATA**

The following table details the share capital structure as of the date of this MD&A:

<b>Common Shares - issued and outstanding</b>				<b>186,602,894</b>
	Exercise price	Expiry Date	Shares Issuable	
	(\$)		(#)	
<b>Warrants</b>	0.050	November 26, 2024	5,000,000	
	0.085	November 26, 2024	1,176,470	6,176,470
<b>Stock options</b>	0.050	October 4, 2024	2,000,000	
	0.120	March 9, 2025	2,580,000	
	0.120	March 9, 2027	900,000	
	0.110	July 8, 2027	1,000,000	
	0.125	April 11, 2026	520,000	7,000,000
				<b>199,779,364</b>

**1.14.3 DISCLOSURE CONTROLS AND PROCEDURES**

The Company has disclosure controls and procedures in place to provide reasonable assurance that any information required to be disclosed by the Company under securities legislation is recorded, processed, summarized and reported within the appropriate time periods and that required information is accumulated and communicated to the Company's management, including the Chief Executive Officer and Chief Financial Officer, as appropriate, so that decisions can be made about the timely disclosure of that information.

**1.14.4 INTERNAL CONTROLS OVER FINANCIAL REPORTING PROCEDURES**

The Company's management, including the Chief Executive Officer and the Chief Financial Officer, is responsible for establishing and maintaining adequate internal control over financial reporting. Under the supervision of the Chief Financial Officer and Chief Executive Officer, the Company's internal control over financial reporting is a process designed to provide reasonable assurance regarding the reliability of financial reporting and the preparation of financial statements for external purposes in accordance with IFRS. The Company's internal control over financial reporting includes those policies and procedures that:

**MANAGEMENT'S DISCUSSION AND ANALYSIS**  
**FOR THE THREE MONTHS ENDED JUNE 30, 2023**

---

- pertain to the maintenance of records that, in reasonable detail, accurately and fairly reflect the transactions and dispositions of the assets of the Company;
- provide reasonable assurance that transactions are recorded as necessary to permit preparation of financial statements in accordance with IFRS, and that receipts and expenditures of the Company are being made only in accordance with authorizations of management and directors of the company; and
- provide reasonable assurance regarding prevention or timely detection of unauthorized acquisition, use or disposition of the Company's assets that could have a material effect on the financial statements.

There has been no change in the design of the Company's internal control over financial reporting that has materially affected, or is reasonably likely to materially affect, the Company's internal control over financial reporting during the period covered by this Management's Discussion and Analysis.

#### **1.14.5 LIMITATIONS OF CONTROLS AND PROCEDURES**

The Company's management, including its Chief Executive Officer and Chief Financial Officer, believe that any system of disclosure controls and procedures or internal control over financial reporting, no matter how well conceived and operated, can provide only reasonable, not absolute, assurance that the objectives of the control system are met. Furthermore, the design of a control system must reflect the fact that there are resource constraints and the benefits of controls must be considered relative to their costs. Because of the inherent limitations in all control systems, they cannot provide absolute assurance that all control issues and instances of fraud, if any, within the Company have been prevented or detected.

These inherent limitations include the realities that judgments in decision-making can be faulty and breakdowns can occur because of simple error or mistake. Additionally, controls can be circumvented by the individual acts of some persons, by collusion of two or more people, or by unauthorized override of controls. The design of any system of controls is also based in part upon certain assumptions about the likelihood of future events, and there can be no assurance that any design will succeed in achieving its stated goals under all potential future conditions.

Accordingly, because of the inherent limitations in a cost-effective control system, misstatements due to error or fraud may occur and not be detected.

#### **1.15 RISK FACTORS**

The risk factors associated with the principal business of the Company are discussed below. Briefly, these include the highly speculative nature of the mining industry characterized by the requirement for large capital investment from an early stage and a very small probability of finding economic mineral deposits.

In addition to the general risks of mining, there are country-specific risks associated with operations, including political, social, and legal risk.

Due to the nature of the Company's business and the present stage of exploration and development of its projects, the Company may be subject to significant risks. Readers should carefully consider all such risks



MANAGEMENT'S DISCUSSION AND ANALYSIS  
FOR THE THREE MONTHS ENDED JUNE 30, 2023

---

set out in the discussion below. The Company's actual exploration and operating results may be very different from those expected as at the date of this MD&A.

***Exploration and Mining Risks***

Resource exploration, development, and operations are highly speculative, characterized by a number of significant risks, which even a combination of careful evaluation, experience and knowledge may not eliminate, including, among other things, unprofitable efforts resulting not only from the failure to discover mineral deposits but from finding mineral deposits which, though present, are insufficient in quantity and quality to return a profit from production. Few properties that are explored are ultimately developed into producing mines. Unusual or unexpected formations, formation pressures, fires, power outages, labour disruptions, flooding, explosions, cave-ins, landslides and the inability to obtain suitable or adequate machinery, equipment or labour are other risks involved in the operation of mines and the conduct of exploration programs. The Company will rely on consultants and others for exploration, development, construction and operating expertise. Substantial expenditures are required to establish mineral resources and mineral reserves through drilling, to develop metallurgical processes to extract the metal from mineral resources, and in the case of new properties, to develop the mining and processing facilities and infrastructure at any site chosen for mining.

No assurance can be given that minerals will be discovered in sufficient quantities to justify commercial operations or that funds required for development can be obtained on a timely basis. Whether a mineral deposit will be commercially viable depends on a number of factors, some of which are:

- the particular attributes of the deposit, such as size, grade and proximity to infrastructure;
- metal prices, which may be volatile, and are highly cyclical; and
- government regulations, including regulations relating to prices, taxes, royalties, land tenure, land use, importing and exporting of minerals, and environmental protection.

The exact effect of these factors cannot accurately be predicted, but the combination of these factors may result in the Company not receiving an adequate return on invested capital.

The Company will carefully evaluate the political and economic environment in considering any properties for acquisition. There can be no assurance that additional significant restrictions will not be placed on the Company's projects and any other properties the Company may acquire, or its operations. Such restrictions may have a material adverse effect on the Company's business and results of operation.

***First Nations***

Our properties are located within First Nations asserted traditional territories, and the exploration and development of these properties may affect, or be perceived to affect, asserted aboriginal rights and title, which has the potential to manifest permitting delays or opposition by First Nations communities.

The Company is working to establish positive relationships with First Nations. As part of this process the Company may enter into agreements commensurate with the stage of activity, with First Nations in relation to current and future exploration and any potential future production. This could reduce

MANAGEMENT'S DISCUSSION AND ANALYSIS  
FOR THE THREE MONTHS ENDED JUNE 30, 2023

---

expected earnings.

***Future Profits/Losses and Production Revenues/Expenses***

The Company has no history of operations and expects that its losses will continue for the foreseeable future. No deposit that has been shown to be economic has yet been found on the Company's projects. There can be no assurance that the Company will be able to acquire any additional properties. There can be no assurance that the Company will be profitable in the future. The Company's operating expenses and capital expenditures may increase in subsequent years as needed consultants, personnel and equipment associated with advancing exploration, development and commercial production of the Company's projects and any other properties the Company may acquire, are added. The amounts and timing of expenditures will depend on:

- the progress of ongoing exploration and development;
- the results of consultants' analyses and recommendations;
- the rate at which operating losses are incurred;
- the execution of any joint venture agreements with strategic partners; and
- the acquisition of additional properties and other factors, many of which are beyond the Company's control.

The Company does not expect to receive revenues from operations in the foreseeable future, if at all. The Company expects to incur losses unless and until such time as the projects the Company advances, or any other properties the Company may acquire, enter into commercial production and generate sufficient revenues to fund its continuing operations.

The development of mineral properties will require the commitment of substantial resources to conduct the time-consuming exploration and development of the properties. There can be no assurance that the Company will generate any revenues or achieve profitability. There can be no assurance that the underlying assumed levels of expenses will prove to be accurate.

***Additional Funding Requirements***

The Company has limited working capital as at the current reporting date.

Further exploration on, and development of, the Company's projects will require additional resources and funding. The Company currently does not have sufficient funds to fully develop these projects. In addition, a positive production decision, if achieved, would require significant funding for project engineering and construction. Accordingly, the continuing development of the Company's properties will depend upon the Company's ability to obtain financing through debt financing, equity financing, the joint venturing of projects, or other means.

There is no assurance that the Company will be successful in obtaining the required financing for these or other purposes, including for general working capital.

MANAGEMENT'S DISCUSSION AND ANALYSIS  
FOR THE THREE MONTHS ENDED JUNE 30, 2023

---

***Competitors in the Mining Industry***

The mining industry is competitive in all of its phases, including financing, technical resources, personnel and property acquisition. It requires significant capital, technical resources, personnel and operational experience to effectively compete in the mining industry. Because of the high costs associated with exploration, the expertise required to analyze a project's potential and the capital required to develop a mine, larger companies with significant resources may have a competitive advantage over Amarc. Amarc faces strong competition from other mining companies, some with greater financial resources, operational experience and technical capabilities than those that Amarc possesses. As a result of this competition, Amarc may be unable to maintain or acquire financing, personnel, technical resources or attractive mining properties on terms Amarc considers acceptable or at all.

***Risks That Are Not Insurable***

Hazards such as unusual or unexpected geological formations and other conditions are involved in mineral exploration and development. Amarc may become subject to liability for pollution, cave-ins or hazards against which it cannot insure. The payment of such liabilities could result in increases in Amarc's operating expenses which could, in turn, have a material adverse effect on Amarc's financial position and its results of operations. Although Amarc maintains liability insurance in an amount which it considers adequate, the nature of these risks is such that the liabilities might exceed policy limits, the liabilities and hazards might not be insurable against, or Amarc might elect not to insure itself against such liabilities due to high premium costs or other reasons. In these events, Amarc could incur significant liabilities and costs that could materially increase Amarc's operating expenses.

***Environmental Matters***

All of the Company's operations will be subject to environmental regulations, which can make operations more expensive or potentially prohibit them altogether.

The Company may be subject to the risks and liabilities associated with potential pollution of the environment and the disposal of waste products that could occur as a result of its activities.

To the extent the Company is subject to environmental liabilities, the payment of such liabilities or the costs that it may incur to remedy environmental pollution would reduce funds otherwise available to it and could have a material adverse effect on the Company. If the Company is unable to fully remedy an environmental problem, it might be required to suspend operations or enter into interim compliance measures pending completion of the required remedy. The potential exposure may be significant and could have a material adverse effect on the Company.

All of the Company's activities are or will be subject to regulation under one or more environmental laws and regulations. Many of the regulations require the Company to obtain permits for its activities. The Company must update and review its permits from time to time, and is subject to environmental impact analyses and public review processes prior to approval of the additional activities. It is possible that future changes in applicable laws, regulations and permits or changes in their enforcement or regulatory interpretation could have a significant impact on some portion of the Company's business, causing those

**MANAGEMENT'S DISCUSSION AND ANALYSIS  
FOR THE THREE MONTHS ENDED JUNE 30, 2023**

---

activities to become economically unattractive at that time.

***Market for Securities and Volatility of Share Price***

There can be no assurance that an active trading market in the Company's securities will be established or sustained. The market price for the Company's securities is subject to wide fluctuations. Factors such as announcements of exploration results, as well as market conditions in the industry, may have a significant adverse impact on the market price of the securities of the Company. Shares of the Company are suitable only for those who can afford to lose their entire investment. The stock market has from time to time experienced extreme price and volume fluctuations, which have often been unrelated to the operating performance of particular companies.

***Conflicts of Interest***

Certain of the Company's directors and officers may serve as directors or officers of other companies or companies providing services to the Company or they may have significant shareholdings in other companies. Situations may arise where these directors and/or officers of the Company may be in competition with the Company. Any conflicts of interest will be subject to and governed by the law applicable to directors' and officers' conflicts of interest. In the event that such a conflict of interest arises at a meeting of the Company's directors, a director who has such a conflict will abstain from voting for or against the approval of such participation or such terms. In accordance with applicable laws, the directors of the Company are required to act honestly, in good faith and in the best interests of the Company.

***Payment of Dividends Unlikely***

There is no assurance that the Company will pay dividends on its shares in the near future. The Company will likely require all its funds to further the development of its business.

***Lack of Revenues; History of Operating Losses***

The Company does not have any operational history or earnings and has incurred net losses and negative cash flow from its operations since incorporation. Although the Company will hope to eventually generate revenues, significant operating losses are to be anticipated for at least the next several years and possibly longer. To the extent that such expenses do not result in the creation of appropriate revenues, the Company's business may be materially adversely affected. It is not possible to forecast how the business of the Company will develop.

***General Economic Conditions***

Market conditions and unexpected volatility or illiquidity in financial markets may adversely affect the prospects of the Company and the value of its shares.

***Reliance on Key Personnel***

The Company will be dependent on the continued services of its senior management team, and its ability

MANAGEMENT'S DISCUSSION AND ANALYSIS

FOR THE THREE MONTHS ENDED JUNE 30, 2023

---

to retain other key personnel. The loss of such key personnel could have a material adverse effect on the Company. There can be no assurance that any of the Company's employees will remain with the Company or that, in the future, the employees will not organize competitive businesses or accept employment with companies competitive with the Company.

Furthermore, as part of the Company's growth strategy, it must continue to hire highly qualified individuals. There can be no assurance that the Company will be able to attract, assimilate or retain qualified personnel in the future, which would adversely affect its business.

***Changes in Federal and Provincial Government Rules, Regulations or Agreements, or Their Application, May Negatively Affect the Company's Ownership Rights, Its Access to or Its Ability to Advance the Exploration and Development of its Mineral Properties***

The federal and provincial governments currently have in place or may in the future implement laws, regulations, policies or agreements that may negatively affect the Company's ownership rights with respect to its mineral properties or its access to the properties. These may restrain or block the Company's ability to advance the exploration and development of its mineral properties or significantly increase the costs and timeframe to advance the properties.